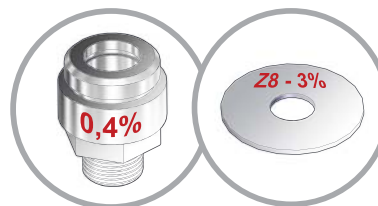
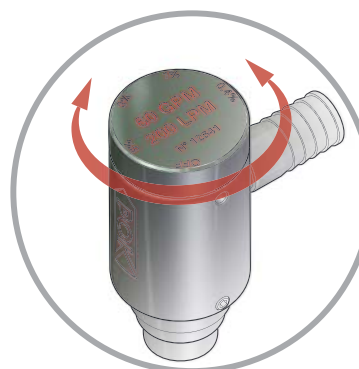


## "ULTRA-LIGHT" eductors with bypass and calibrated orifices

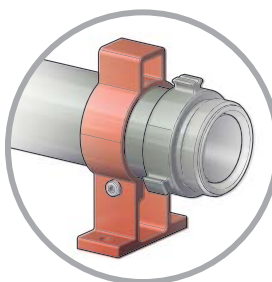
**Compatibility**  
Equipment can be delivered  
with threads  
**NST/NH (NFPA 1963),**  
**BSP (ISO R 228)**  
or standardised couplings



Calibrated orifices are supplied as standard and allow a precise foam concentrate percentage while having a non-return valve function. The suction percentages are: 0,4%, 1%, 3% or 6% depending on your requirement.



As an option, eductors can be equipped with metering devices to mount instead of calibrated orifices to allow to change the setting of the percentage during use, and having a non-return valve function.

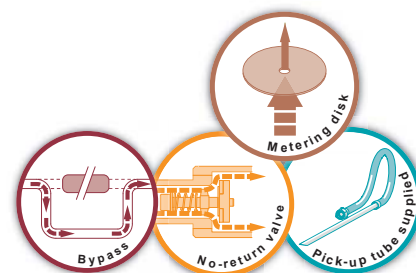


Other option: the foot in aluminium alloy for the 2.5" eductor model

Maximum working pressure: PN16  
Material: aluminium alloy  
Surface treatment: hard anodisation  
Body type: cut into bars  
Non-return valve: yes  
Pressure loss: 40%  
Supplied with pick-up tube: yes  
Options: metering device, fixation foot.

Our range of "ULTRA-LIGHT" eductors with bypass is made entirely in aluminium alloy hard anodised. Our eductors are mounted in front of nozzles for operation with water or foam. The removable non-return valve with calibrated orifices allow for a dosage of 0.4, 1, 3 and 6%.

Our range of eductors are used with flow rates from 200 to 800 lpm and various possible connections: threaded BSP or NST-NH or standardised couplings. Every product is furnished with a pick up tube and a suction pipe.



Inlet	Outlet	Suction percentage adjustment	Flow rate / Working pressure				Dimensions (mm)	Weight (kg)	Ref.
			lpm	Bar	GPM	PSI			
1.5" NST-NH female	1.5" NST-NH male	0,4%, 1%, 3%, 6%	200	10	60	200	159 x 100 x 75	0,99	09949
1.5" BSP female	1.5" BSP male	0,4%, 1%, 3%, 6%	200	10	60	200	159 x 100 x 75	0,99	09949. BSP
1.5" NST-NH female	1.5" NST-NH male	0,4%, 1%, 3%, 6%	300	10	95	200	159 x 100 x 75	0,99	09950
1.5" BSP female	1.5" BSP male	0,4%, 1%, 3%, 6%	300	10	95	200	159 x 100 x 75	0,99	09950. BSP
1.5" NST-NH female	1.5" NST-NH male	0,4%, 1%, 3%, 6%	400	10	125	200	159 x 100 x 75	0,99	09951
1.5" BSP female	1.5" BSP male	0,4%, 1%, 3%, 6%	400	10	125	200	159 x 100 x 75	0,99	09951. BSP
2.5" NST-NH female	2.5" NST-NH male	0,4%, 1%, 3%, 6%	750	10	200	200	271 x 142 x 108	2,28	08918
2.5" NST-NH female	2.5" NST-NH male	0,4%, 1%, 3%, 6%	800	10	200	200	271 x 142 x 108	2,28	12483
2.5" BSP female	2.5" BSP male	0,4%, 1%, 3%, 6%	800	10	250	200	271 x 142 x 108	2,28	12481
2.5" BSP male	2.5" BSP male	0,4%, 1%, 3%, 6%	800	10	250	200	271 x 142 x 108	2,08	24485