



Remote Control Monitors

Product:

Spectrum Direct-Mounted Electric Actuated Monitor

Description:

Flows water or foam from 500 to 6,000 gpm. The Spectrum Direct-Mounted Electric Actuated High Volume/Remote Control Monitor has a programmable oscillation capability, but may also be overridden with a matched Hydro-Foam™ nozzle operated remotely through the use of a joystick and switches on a consolidated control panel. Manual operation can also be accomplished locally through the use of handwheels. Foam concentrate can be proportioned at the nozzle through the use of a jet ratio controller and atmospheric concentrate storage tank. All electric actuators are reversible, NEMA 7 explosion proof, refinery grade, FM Approved and C.S.A. certified. No external controls, starters, or starters in motor control center are needed. Only power and control conductors are required. Monitor can be programmed to "return to home" position (horizontal, vertical, nozzle to wide angle fog) after use, automatically, whether P.L.C. controlled or hard wired.



Two direct mounted electric actuators with speed reducing gear drives installed on the motor enable remote control of horizontal position, as well as vertical trajectory. Field-adjustable limit switches on each actuator allow 340° horizontal rotation and from minus (-)70° to plus (+)70° vertical travel. Monitor traversing speed is a least 10° per second. A third direct-mounted electric actuator enables remote operation for the nozzle's discharge pattern, from wide fog to straight stream.

Weather protective cowlings are provided over all gears and shafts. Monitor and controls are designed for minus (-)20° F operation. Maximum working pressure is 200 psi.

Stainless Steel monitor (waterway) with red epoxy finish. Includes lifting lug for handling and mounting. Stainless steel swivels with stainless steel ball bearings. Steel/bronze gears. Nickel plated brass shaft. Standard motor voltage is 480/3/60. Standard Control voltages is 120 Vac. Other voltages are available when required.

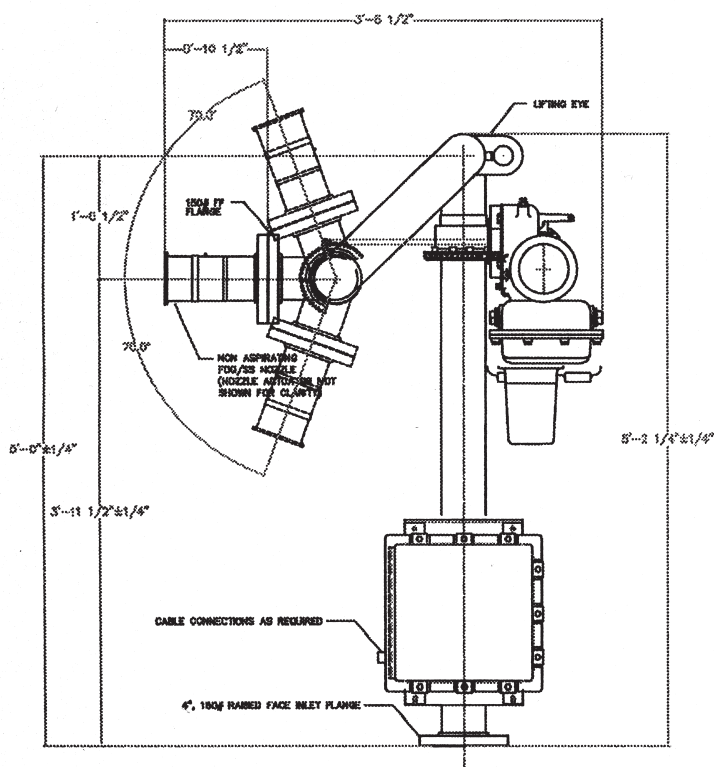
NOTES:

- Monitor Mounted Junction Box is NEMA 4X, pre-wired to monitor actuators, with all required electrical interface equipment"
- 4" or 6" fabricated stainless steel waterways provide maximum flow efficiency, minimum friction loss, and provides the ultimate in product longevity.
- Normally supplied with custom control panel — wireless options available
- Exceeds all known competitors' specifications, options, and performance
- Suitable for Marine/Dock Protection, and any special hazards protection
- Engineered Tower/Waterway available, heights from 5' to 40'
- Matched water supply specialty deluge valve and strainer packages available

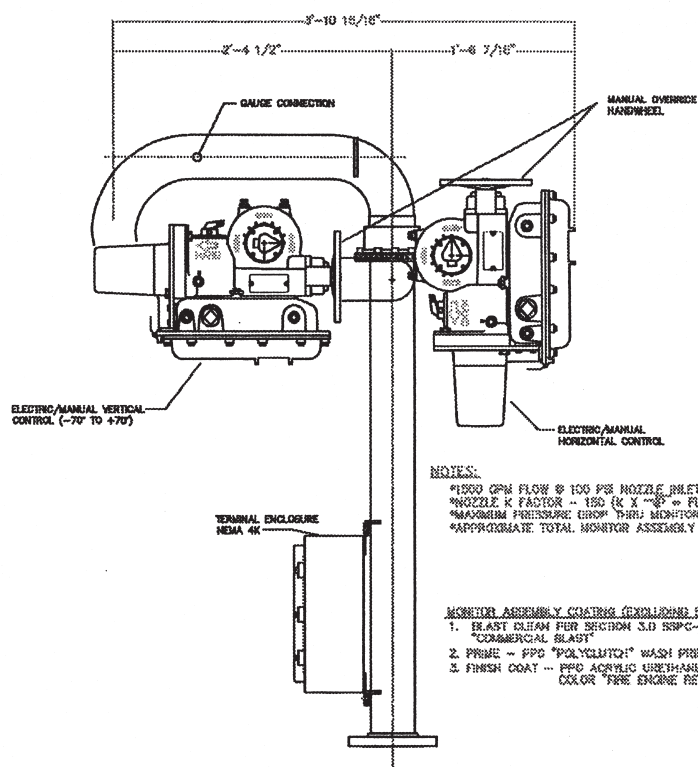
Model	Nominal flow range	Inlet	Pressure Drop
4" Waterway Monitor	500-1500 gpm	4" flange	@ 1500 gpm-9 psi
6" Waterway Monitor	1500-3000 gpm	6" flange	@ 3000 gpm-7 psi
8" Waterway Monitor	2500-6000 gpm	8" flange	@ 6000 gpm-10 psi



Remote Control Monitors



Spectrum Direct-Mounted Electric Actuated Monitor

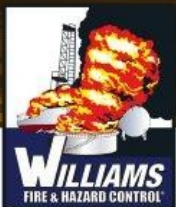


NOTES:

- *1500 GPM FLOW @ 100 PSI NOZZLE INLET (FACTORY SET).
- *NOZZLE K FACTOR -- 150 (K X \sqrt{P} = FLOW)
- *MAXIMUM PRESSURE GROUP THREE MONITOR -- 10 PSI
- *APPROXIMATE TOTAL MONITOR ASSEMBLY WEIGHT -- 825 lbs.

MONITOR ASSEMBLY COATING (EXCLUDING SUPPORT BLOWN)

1. BLAST CLEAN PER SECTION 5.0 SSPC-SP-8 "COMMERCIAL BLAST"
2. PRIMER -- FPD "POLYCLUTCH" WASH PRIMER
3. FINISH COAT -- FPD ACRYLIC URETHANE, 4-5 MIL DFT COLOR "FIRE ENGINE RED"



MONITORS

Direct-Mount Electric Actuated Monitor

GENERAL DESCRIPTION

Flows water or foam from 500 to 6,000 gpm. The Direct-Mounted Electric Actuated High Volume/Remote Control Monitor has a programmable oscillation capability, but may also be overridden with a matched Hydro-Foam™ nozzle operated remotely through the use of a joystick and switches on a consolidated control panel. Manual operation can also be accomplished locally through the use of hand-wheels. Foam concentrate can be proportioned at the nozzle through the use of a jet ratio controller and atmospheric concentrate storage tank. All electric actuators are reversible, NEMA 7 explosion proof, refinery grade, F.M. Approved and C.S.A. certified. No external controls, starters, or starters in motor control center are needed. Only power and control conductors are required. Monitor can be programmed to “return to home” position (horizontal, vertical, nozzle to wide angle fog) after use, automatically, whether P.L.C. controlled or hard wired.



Two direct mounted electric actuators with speed reducing gear drives installed on the motor enable remote control of horizontal position, as well as vertical trajectory. Field adjustable limit switches on each actuator allow 340° horizontal rotation and from minus (-)70° to plus (+)70° vertical travel. Monitor traversing speed is a least 10 per second. A third direct-mounted electric actuator enables remote operation for the nozzle's discharge pattern, from wide fog to straight stream.

Weather protective cowlings are provided over all gears and shafts. Monitor and controls are designed for minus (-)20° F operation. Maximum working pressure is 200 psi.

Stainless Steel monitor (waterway) with red epoxy finish. Includes lifting lug for handling and mounting. Stainless steel swivels with stainless steel ball bearings. Steel/bronze gears. Nickel plated brass shaft. Standard motor voltage is 480/3/60. Standard Control voltages is 120 Vac. Other voltages are available when required.

NOTES:

Monitor Mounted Junction Box is NEMA 4X, pre-wired to monitor actuators, with all required electrical interface equipment” 4” or 6” fabricated stainless steel waterways provide maximum flow efficiency, minimum friction loss, and provides the ultimate in product longevity.

Normally supplied with custom control panel — wireless options available

Exceeds all known competitors' specifications, options, and performance

Suitable for Marine/Dock Protection, and any special hazards protection

Engineered Tower/Waterway available, heights from 5' to 40'

Matched water supply specialty deluge valve and strainer packages available

TABLE - PRODUCT MODELS

Model	Nominal flow range	Inlet	Pressure Drop
4" Waterway Monitor	500-1500 gpm	4" flange	@ 1500 gpm-9 psi
6" Waterway Monitor	1500-3000 gpm	6" flange	@ 3000 gpm-7 psi
8" Waterway Monitor	2500-6000 gpm	8" flange	@ 6000 gpm-10 psi

