



**ULTRATECH**  
INTERNATIONAL, INC.

# Ultra-Overpack® Plus

## 20 & 30 Gallon Salvage Drums

Part# 0585 & 0587

## Packaging Limitations and Closure Instructions

Designed to Meet 49CFR173.3(c): Salvage Drum Regulations

### UN Marking:

20 Gallon (PN 0587): **1H2/X66/S/\*\*/USA/AA9656**

30 Gallon (PN 0585): **1H2/X100/S/\*\*/USA/AA9656**

Note: “\*\*” represents year of manufacture



**It is the shipper’s responsibility to package and ship this packaging in accordance with prevailing applicable transportation regulations.**

### Limitations:


1. The Ultra-Overpack Plus is approved as a single trip salvage drum.
2. Lid closure for transportation can only be performed once.
3. Gross package weight of the Overpack Plus and lid is **not to exceed**:
  - a. For the 20 Gallon Overpack Plus (PN 0587): 145 lbs. (66 Kilograms).
  - b. For the 30 Gallon Overpack Plus (PN 0585): 220 lbs. (100 Kilograms).
4. The tare weight of Ultra-Overpack Plus and lid is:
  - a. For the 20 Gallon Overpack Plus (PN 0587): 11.9 lbs. (5.4 Kilograms).
  - b. For the 30 Gallon Overpack Plus (PN 0585): 14.8 lbs. (6.7 Kilograms).
5. Do not fill container above the bottom of the thread.
6. No free liquids are to be transported. This Ultra-Overpack Plus has been qualified to ship solids only. Use a loose fill absorbent to fill any void areas and absorb any free liquid.
7. Always check the chemical compatibility of the material in the Ultra-Overpack Plus. (Contact UltraTech for a chemical compatibility guide.)

### Closure Instructions on Back

## Closure Instructions:

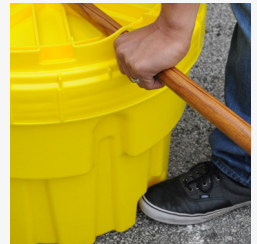
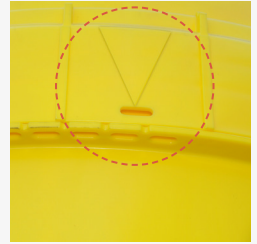
**STEP 1:** Place contents into the Ultra-Overpack Plus. Make sure top sealing edge of the Ultra-Overpack Plus is free from debris, cuts or gouges.

**STEP 2:** Place lid onto the Ultra-Overpack Plus and twist the lid in a clockwise direction until the lid is “hand tightened.”

**STEP 3:** Continue tightening the lid (additional torque may be required) until the hole under the alignment arrow on the lid lines up with the group of holes on the base of the Ultra-Overpack Plus. 

*Note: Additional torque may require the use of a long 2” x 4” board, rebar or a shovel handle. The board, rebar or handle can be placed between the slots or through the eyeholes on the lid to allow sufficient torque to tighten the arrow to the alignment holes on the base of the Overpack. Better leverage can also be gained by placing your foot into the recesses on the base of the overpack while tightening the lid. Silicone lubricant can be sprayed on the gasket to allow tightening the lid without the use of a substrate.*

*Note: Occasionally temperature and operating conditions can affect tolerances of the Ultra-Overpack Plus. If you are unable to tighten the lid so that the hole under the alignment arrow on the lid lines up with the group of holes on the base of the overpack, please tighten the lid as far as possible and allow the Ultra-Overpack Plus to sit for 1-2 hours. Then tighten the lid further. The delay allows the gasket to reset and allow further tightening. This can be repeated until the holes are aligned properly.*



**STEP 4:** To secure the Ultra-Overpack from tampering, you can attach a zip tie through the holes in the lid and the base of the overpack.



**CAUTION: DO NOT SHIP THE ULTRA-OVERPACK PLUS 20G or 30G UNTIL THE HOLE UNDER THE ALIGNMENT ARROW ON THE LID MATCHES UP WITH ONE OF THE HOLES ON THE BASE OF THE OVERPACK.**

**If you have any questions regarding the packaging limitations or closure instructions please contact us.**