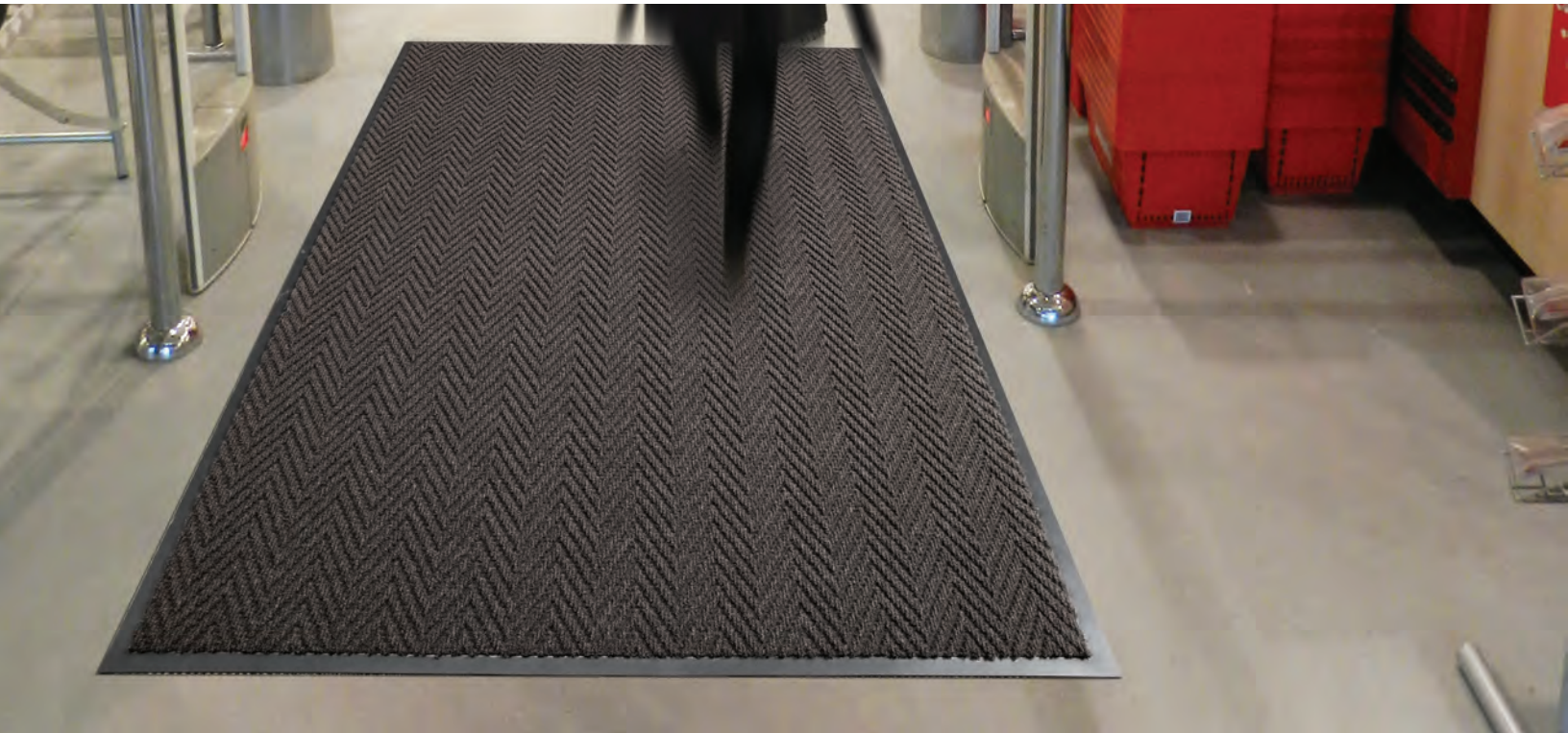




Justrite Safety Group

**118 - ARROW TRAX®**  
PRODUCT INFORMATION BROCHURE





For over 70 years, the name Notrax<sup>®</sup> has meant superior quality, service, and innovative products. Now this brand is a cornerstone of Justrite Safety Group, offering the widest selection of products to a variety of markets and applications including entrance mats, anti-fatigue/safety mats, and products designed specifically for use in professional food service environments. Notrax<sup>®</sup> offers a complete selection of floor matting options to meet any application requirement, quality expectation, and budget.

- **Track record of manufacturing high quality mats for over seventy years**
- **All products are manufactured in ISO certified facilities**
- **Notrax<sup>®</sup> offers anti-fatigue matting, entrance matting, safety matting, food service matting and specialty mats designed for a variety of industries**

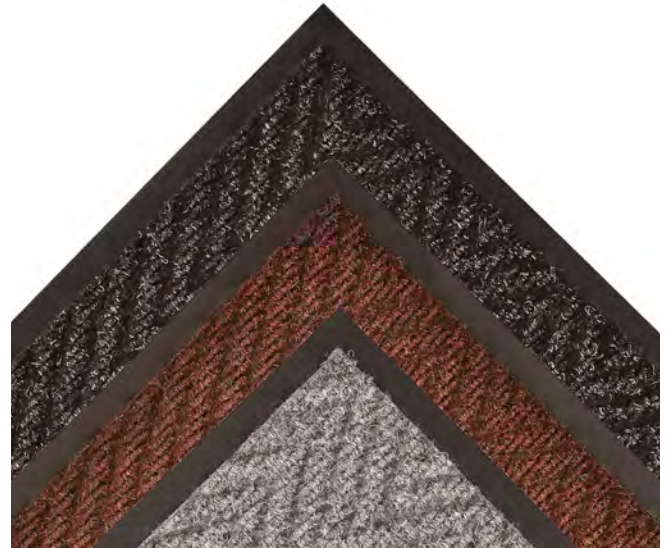


**118 - ARROW TRAX®** mats provide exceptional performance in highly visible areas that require a subtly attractive yet functional matting product. The durable herringbone pattern offers non-directional scraping action and moisture retention, and a full 40 ounces of needle-punched yarn per square yard provides the highest degree of crush resistance in heavy traffic areas. Heavy-weight vinyl non-slip backing ensures minimum movement.

**Material:** Polypropylene Carpet W/Vinyl Backing

**Features and Benefits:**

- Scraper mat
- High/low herringbone carpet scrapes and channels moisture and debris away from shoes
- 40 ounces of needle-punched yarn per square yard
- Low profile to perform in narrow clearance doorways
- Vinyl backing ensures minimal buckling and mat movement
- Recommended and approved product as a part of the GreenTRAX™ program for “Green Cleaning” environments






MODEL: 118

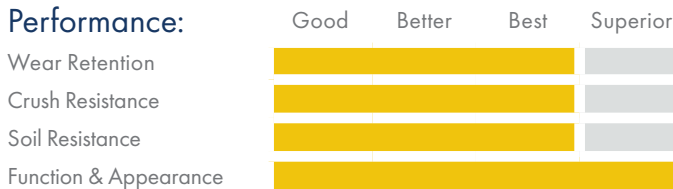
## SPECIFICATIONS

**APPLICATIONS**

- Schools
- Hospital Entrances
- Lobbies
- Entranceways

Stock Sizes	2'x3', 3'x4', 3'x5', 3'x6', 3'x10', 4'x6', 4'x8'
Roll Sizes	3'x60', 4'x60', 6'x60'
Thickness	3/8"
Cut Lengths	3', 4', and 6' widths (up to 60' long)
Colors	 Charcoal  Brown  Grey

**Performance:**



# TESTING DATA

Test	Test Description	Results
ASTM 5252-98a	Accelerated Wear - 4,000 cycles (Hexapod Tumble Drum Tester)	Appearance: 2.3 Color: 3.0
ASTM D3936-05	Delamination	Exceeds backing strength
ASTM D6540-05	Accelerated Soiling	Based on Visual Inspection 5.0 - Vacuum Rating 5.0 - Rating After Extraction
ASTM D412	Breaking Load/Elongation	227.2 lbs/in <sup>2</sup>
ASTM D1894-08 (modified)	Static & Kinetic Coefficient of Friction	1.20
ASTM D2859 (CPSC FF 1-70)	Flammability	Pass

\*Testing performed by an independent test laboratory.

## NOTRAX®

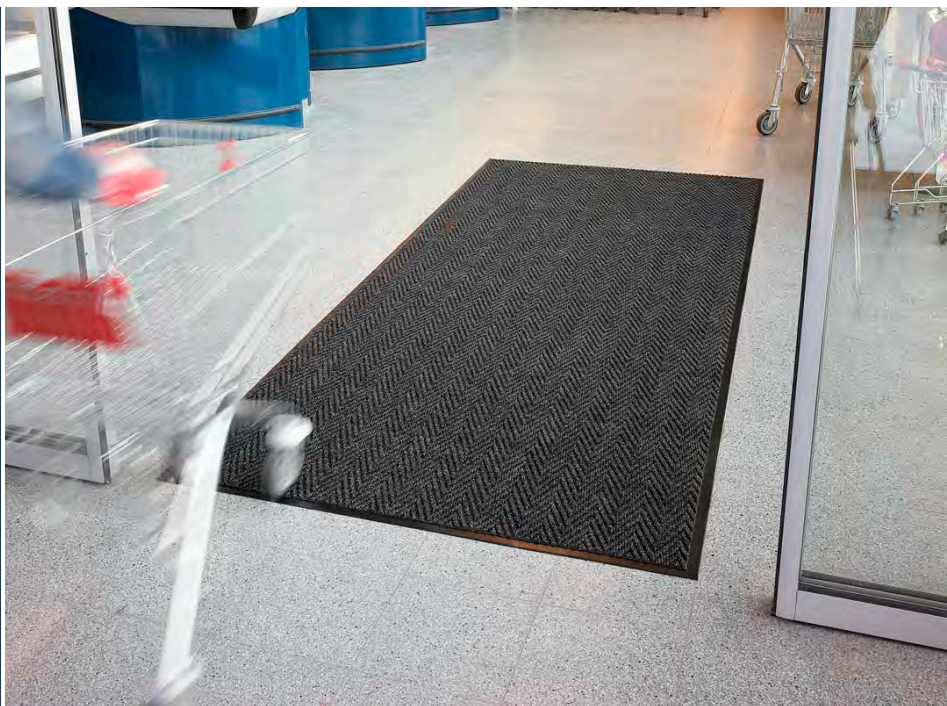
5655 West 73rd Street  
Chicago, IL 60638

**PHONE:** (800) 621-2802

**FAX:** (800) 322-7105

**EMAIL:** saleschicago@checkers-safety.com

[www.notrax.com](http://www.notrax.com)



A PRODUCT OF:



Justrite Safety Group is the leading source of safety equipment for flammables and hazardous materials storage and handling, asset protection, environmental protection spill containment, absorbents, specialized chemical storage, cable management, safety showers and eye/face washes, matting, and vehicle safety equipment. Learn more at [Justrite.com](http://Justrite.com), [Checkers-safety.com](http://Checkers-safety.com), and [Notrax.com](http://Notrax.com).