

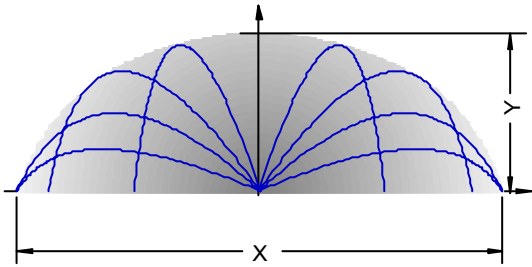


WATERWALL NOZZLES ANTI-RECOIL ELBOWS

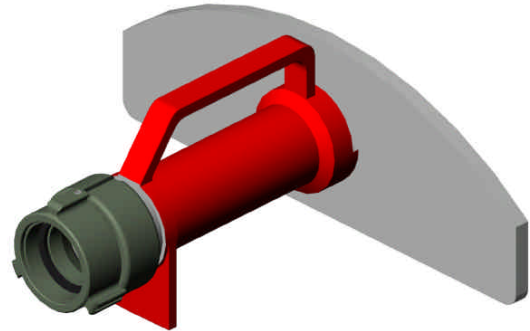
Hardcoat Anodized Aluminum and PTFE

Manufactured primarily of anodized aluminum and stainless steel. This nozzle is designed to deliver a flat screen of water to form a protective curtain.
Ball bearing female inlet swivel.
Available in 1.5" or 2.5"

Flow Pattern



Flow 500 l/min / 135 GPM: X=26 m / 85 ft, Y=7 m / 23 ft
Flow 1200 l/min / 320 GPM: X=32 m / 105 ft, Y=10 m / 32 ft



Code	Description	H	W	L	Weight	FLOW	
						GPM	LPM
2238	Waterwall 1.5" inlet	5.3"	12.5"	9.2"	3.5 lb	135	500
2239	Waterwall 2.5" inlet	6.5"	15.8"	12.5"	6.8 lb	320	1200

The **POK** anti-recoil @ 50° transfers the force of a charged fire hose to reduce fatigue, weight and nozzle reaction up to 25%
Available in 1.5" or 2.5".



Anti-Recoil 1.5"



Anti-Recoil 2.5"



Anti-Recoil DIN 14-368 - 2.5"

Code	Description	H	W	L	Weight
2308	Anti-Recoil elbow 1.5" inlet	8.0"	3.0"	12.0"	2.8 lb
2309	Anti-Recoil elbow 2.5" inlet	7.0"	4.5"	18.0"	5.5 lb
16036	Anti-Recoil elbow DIN 14-368 2.5" inlet	8.3"	3.5"	14.7"	5.0 lb