



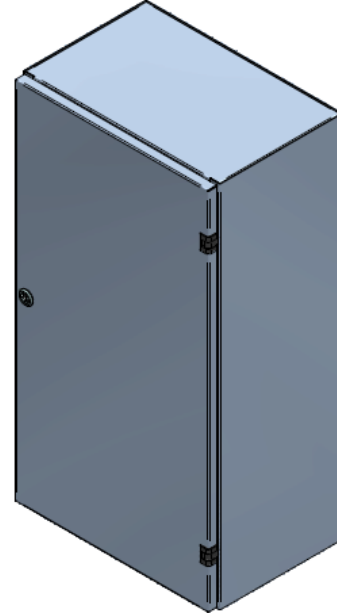
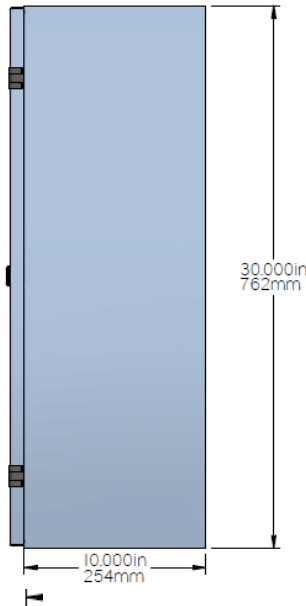
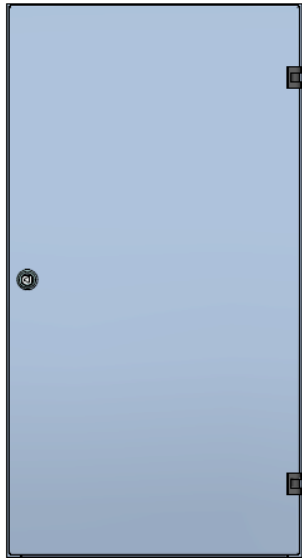
IRP FIRE & SAFETY LTD.

A member of the IRP Group of Companies

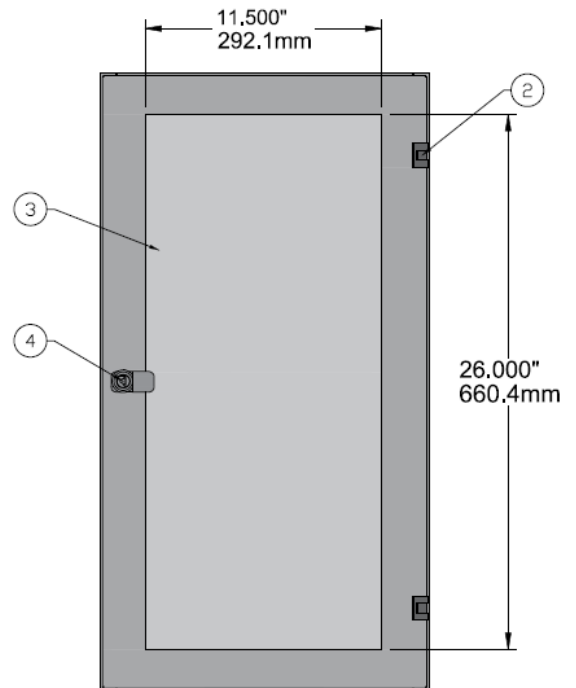
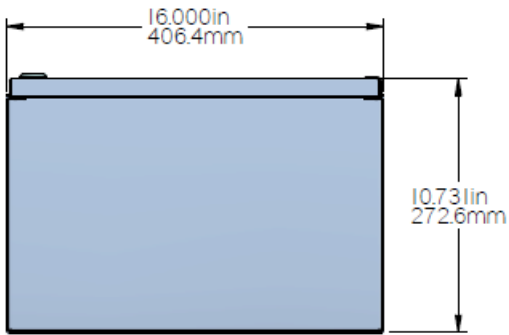
EXTINGUISHER & HOSE REEL CABINETS



Fire Extinguisher Cabinet



**Optional
(With Plexi Glass)**

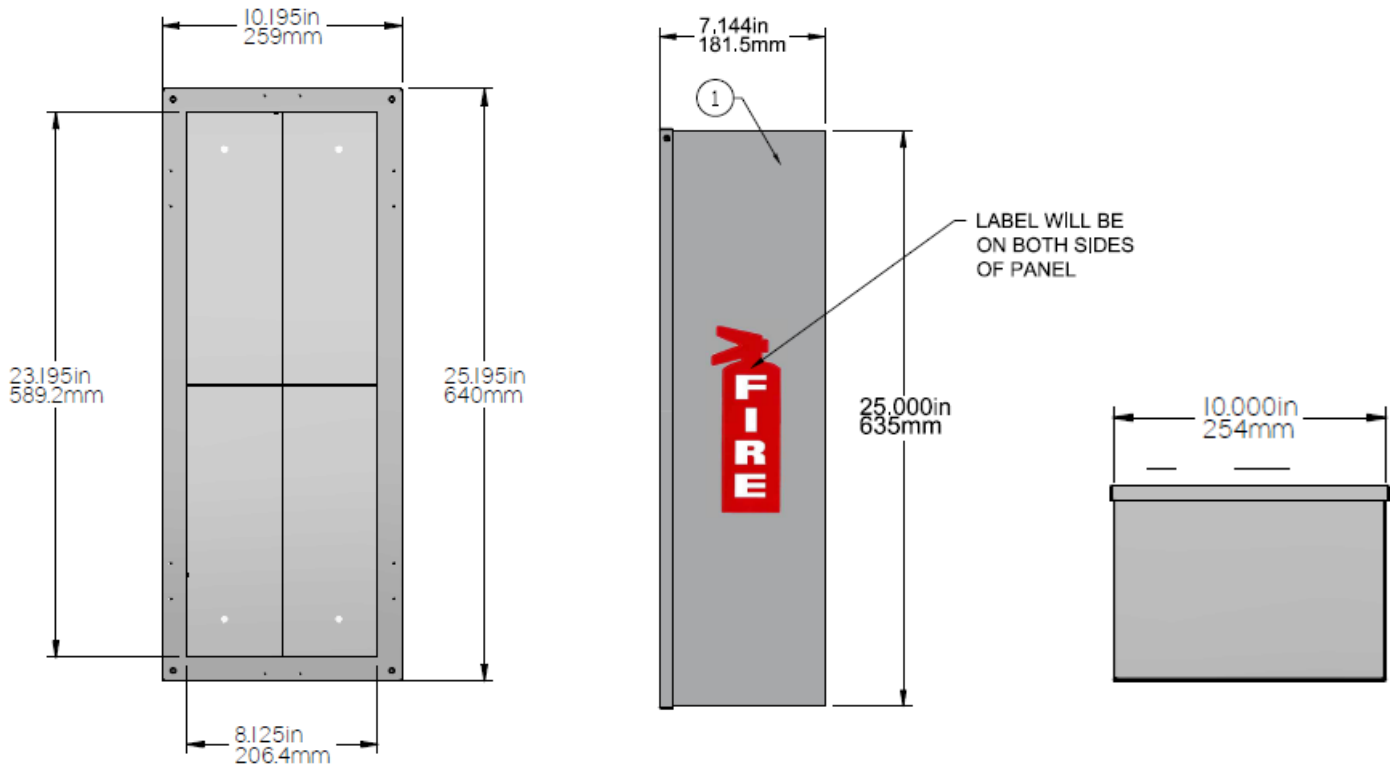


Fire Extinguisher Cabinet

- White Surface
- Mounted
- 30"H x 16"W x 10"D
- Solid Door w/push button latch, 16-Gauge Cold Roll Steel
- (10lbs&20lbs CO2 & 20lb ABC)
- P/N FJO810-15

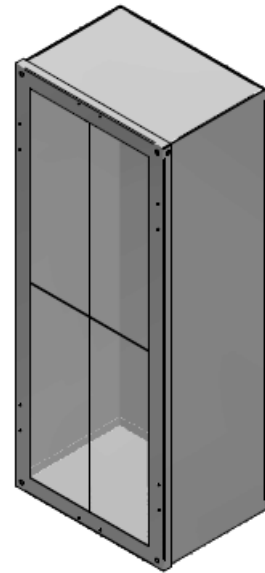
| ATO | DESCRIPTION |
|-----------------|---|
| 1-ER512-13111-1 | Cabinet, Fire Extinguisher, White Surface Mounted, 30"H x 16"W x 10"D, with Solid Door w/push button latch, 16-Gauge Cold Roll Steel, (10lbs&20lbs CO2 & 20lb ABC), P/N FJO810-15 |

Fire Extinguisher Cabinet



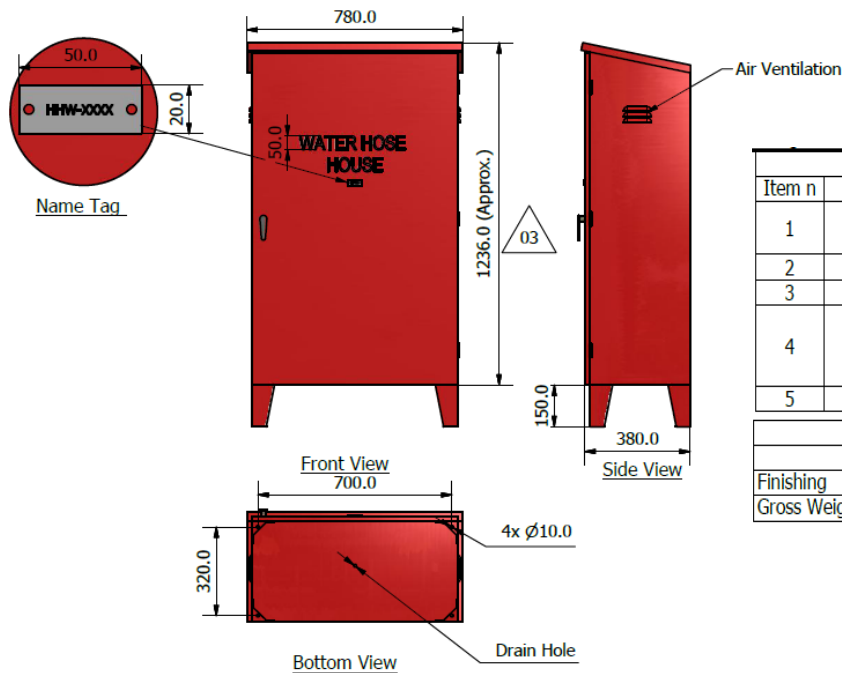
Fire Extinguisher Cabinet

- White Surface
- Mounted
- 25"H x 10"W x 7"D
- Plexi Glass Cutout on Door w/Allen Screws for Cover
- 20-Gauge Cold Roll Steel
- FJO0514-15;
- (5lbs&10lbs ABC)



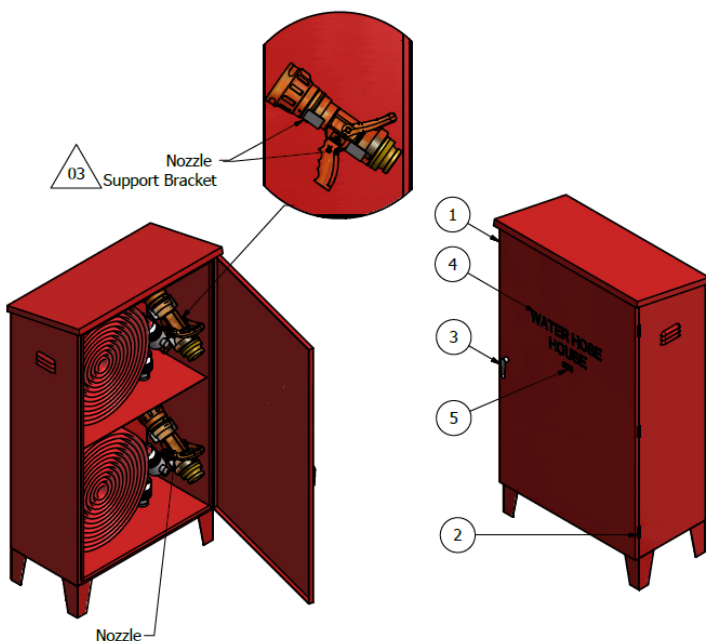
| ATO | DESCRIPTION |
|-----------------|--|
| 1-ER512-12111-1 | Cabinet, Fire Extinguisher, White Surface Mounted, 25"H x 10"W x 7"D, with Plexi Glass Cutout on Door w/ Allen Screws for Cover, 20-Gauge Cold Roll Steel, FJO0514-15; (5lbs&10lbs ABC). |

Self Standing Fire Hose Cabinet (4 Hoses)



| BOM Part List | | | | |
|---------------|---|--|----------|-----|
| Item n | Description | Material | Com no. | Qty |
| 1 | Material | Electro Galvanise Steel Plate, Thk 1.5mm | 03036005 | 1 |
| 2 | Butt Hinges | Stainless Steel | 03048900 | 3 |
| 3 | Lever Lock | Chrome Plate Cast Iron | 03114801 | 1 |
| 4 | Wording : 50mm Silkscreen White Arial Font | - | - | 1 |
| 5 | Name Tag | Stainless Steel | - | 1 |

| Technical Specification | |
|-------------------------|--|
| Description | Specification |
| Finishing | Red Polyester Powder Coated (RAL 3000) |
| Gross Weight (Approx.) | 50.5 KG |



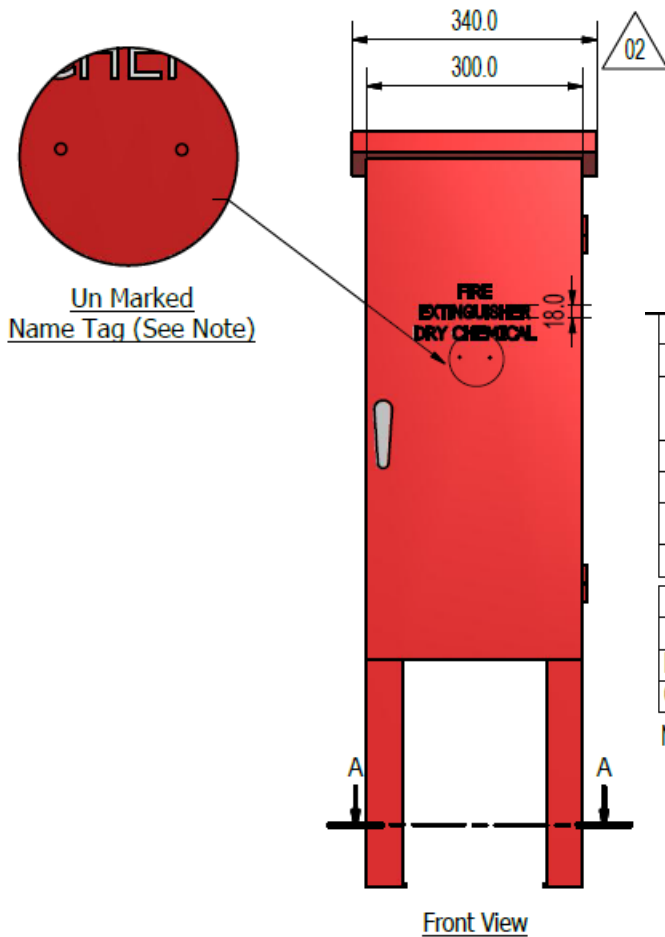
Fire Hose Cabinet

- Single Door
- 1236mm H x 780mm W x 380mm D (48.7"H x 30.7"W 15"D)
- Weatherproof Electro-Galvanized 1.5mm Steel
- Hose Storage House
- Painted Red RAL3000.
- c/w 2 x Louver Vent
- Single Reinforced Door
- Stainless Steel Butt Hinges and Lockable Handles.
- "WATER HOSE HOUSE" Label
- SS MHI Tag. Adjustable Shelf
- 2 x Nozzle Support Brackets and 6" Floor Mounting Supports
- Drawing # 50001583-Water
- LingJack Model # C-FH8

Self Standing Fire Hose Cabinet (4 Hoses)

| ATO | DESCRIPTION |
|-----------------|---|
| P-ER711-11111-1 | Cabinet, Fire Hose, Single Door, 1236mm H x 780mm W x 380mm D (48.7"H x 30.7"W 15"D), Weatherproof Electro-Galvanized 1.5mm Steel, Hose Storage House, Painted Red RAL3000. c/w 2 x Louver Vent, Single Reinforced Door, Stainless Steel Butt Hinges and Lockable Handles. "WATER HOSE HOUSE" Label, SS MHI Tag. Adjustable Shelf, 2 x Nozzle Support Brackets and 6" Floor Mounting Supports, Drawing # 50001583-Water. LingJack Model # C-FH8 |

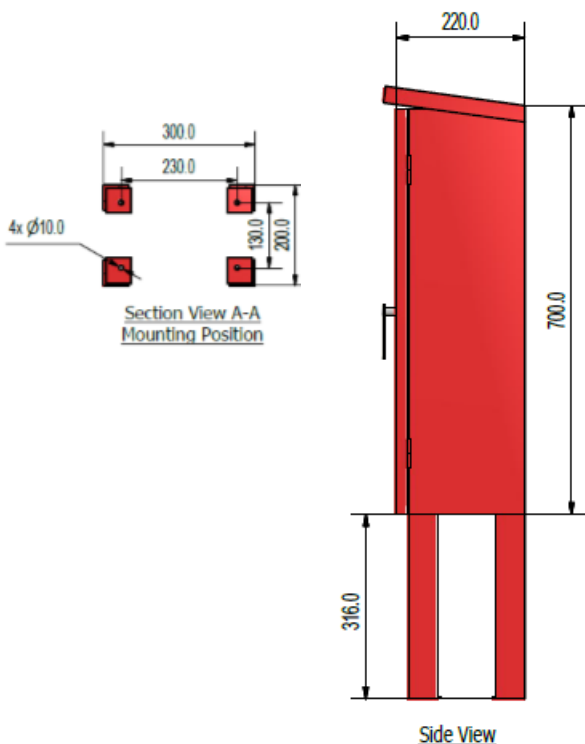
Fire Extinguisher Cabinet/ Lever Lock



| BOM Part List | | | | |
|---------------|--|---|----------|-----|
| Item no | Description | Material | Com no. | Qty |
| 1 | Material | Electro Galvanise Steel Plate,Thk 1.2mm | 03054200 | 1 |
| 2 | Butt Hinges | Stainless Steel | 03048900 | 2 |
| 3 | Lever Lock | Chrome Plate Cast Iron | 03114801 | 1 |
| 4 | Wording : 18mm Silkscreen White Arial Font | - | - | 1 |
| 5 | Name Tag | Stainless Steel | - | 1 |

| Technical Specification | |
|-------------------------|--|
| Description | Specification |
| Finishing | Red Polyester Powder Coated (RAL 3000) |
| Gross Weight (Approx.) | 18.0KG |

Note: 1. Item 5 Tag Name & Screw will loss supply in cabinet to client.



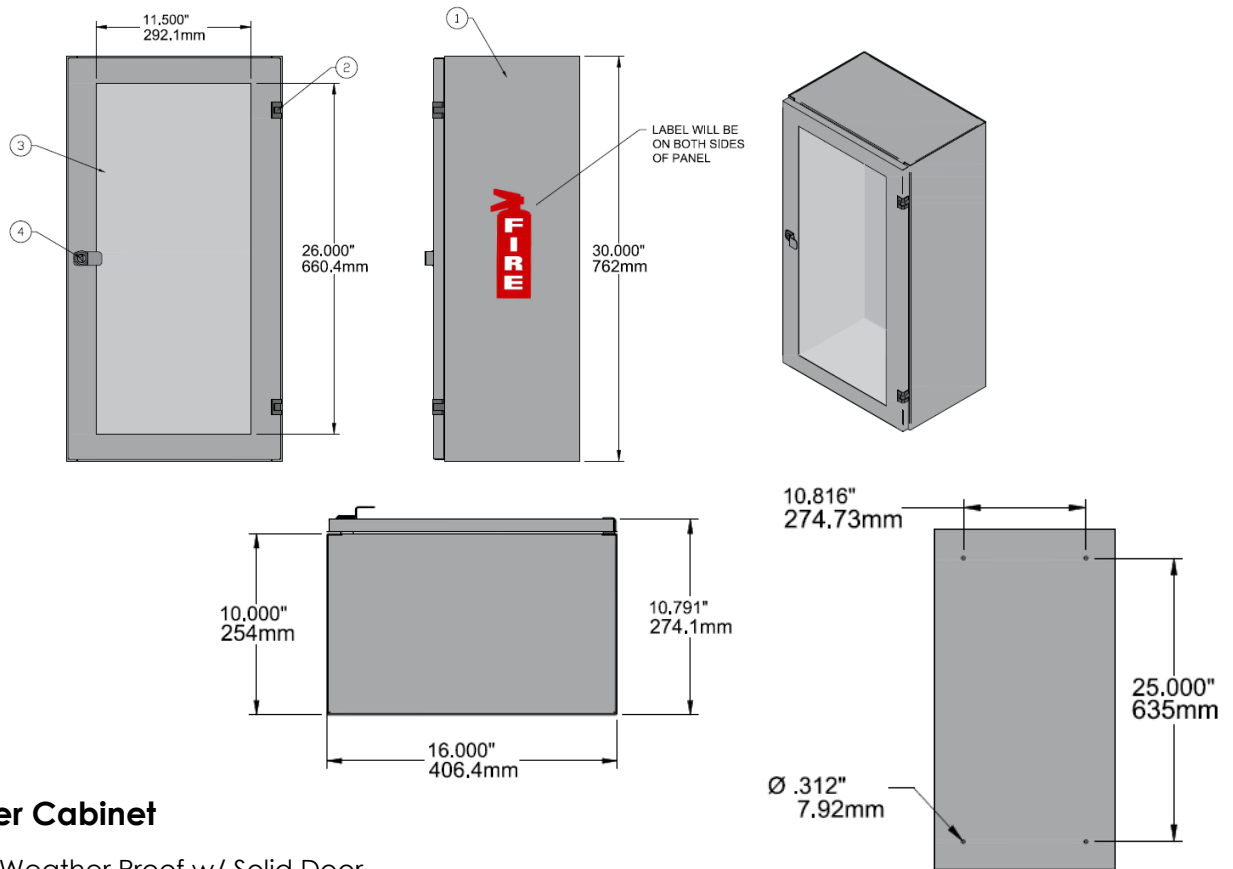
Fire Extinguisher Cabinet

- Self-Standing Weather Proof w/ Solid Door
- (Marked Fire Extinguisher - Dry Chemical)
- 700mm H x 340mm W x 220 mm D (25.6"H x 13.4"W x 8.7"D)
- Made of 1.2mm Electro Galvanize (EG) Steel Sheet
- w/ Polyester Powder Coating, Butt Hinges
- Lever Lock
- SS Blank Tags,
- Red RAL 3000 Coated
- Drawing # 50001584
- Lingjack

Fire Extinguisher Cabinet/ Lever Lock

| ATO | DESCRIPTION |
|-----------------|---|
| 1-ER713-11111-1 | Cabinet, Fire Extinguisher, Self-Standing Weather Proof w/ Solid Door (Marked Fire Extinguisher - Dry Chemical), 700mm H x 340mm W x 220 mm D (25.6"H x 13.4"W x 8.7"D, Made of 1.2mm Electro Galvanize (EG) Steel Sheet w/ Polyester Powder Coating, Butt Hinges, Lever Lock, SS Blank Tags, Red RAL 3000 Coated, Drawing # 50001584. Lingjack |

Fire Extinguisher Cabinet/ Plexi Door



Fire Extinguisher Cabinet

- Self Standing Weather Proof w/ Solid Door
- (Marked Fire Extinguisher - Dry Chemical)
- 700mm H x 340mm W x 220 mm D (25.6\"H x 13.4\"W x 8.7\"D
- Made of 1.2mm Electro Galvanize (EG) Steel Sheet w/ Polyester Powder Coating
- Butt Hinges
- Lever Lock
- SS Blank Tags
- Red RAL 3000 Coated
- Drawing # 50001584. Lingjack

| BOM Part List | | | |
|---------------|-------------|---|-----|
| Item no | Description | Material | Qty |
| 1 | Material | Electro Galvanize Sheet Steel, Red or White Available | 1 |
| 2 | Hinges | Zinc Diecasted powered coated Black | 2 |
| 3 | Sheets | Plexi - Acrylic | 1 |
| 4 | Snap Lock | Zinc Diecasted Chrome Plated | 1 |

| ATO | DESCRIPTION |
|-----------------|--|
| 1-ER713-11111-1 | Cabinet, Fire Extinguisher, Self-Standing Weather Proof w/ Solid Door (Marked Fire Extinguisher - Dry Chemical), 700mm H x 340mm W x 220 mm D (25.6\"H x 13.4\"W x 8.7\"D, Made of 1.2mm Electro Galvanize (EG) Steel Sheet w/ Polyester Powder Coating, Butt Hinges, Lever Lock, SS Blank Tags, Red RAL 3000 Coated, Drawing # 50001584. Lingjack |



Contact Us

www.irpltd.com

Address: 119 Boundary Road, San Juan, Trinidad W.I

Phone: 674-0693 | 0694 | 3632.

Fax: 674-0736 | 675-3873

Email: csr.fse@irpltd.com





IRP FIRE & SAFETY LTD.

A member of the IRP Group of Companies



Kitchen Mister

Fire Suppression Systems

Fire Starts
Time = 0 seconds



System Activated
Time = 15 seconds



Fire Out
Time = 17.4 seconds



**“Protect with the best
& install for less”**

Protecting the modern commercial kitchen from the ever-present danger of cooking oil and grease fires is the reason why The Buckeye Kitchen Mister System was developed. Utilizing state of the art misting technology, the Kitchen Mister System has proven to be the most effective fixed kitchen fire extinguishing system ever developed, extinguishing potentially deadly kitchen fires fast, before they can spread. That's why the Kitchen Mister System is quickly becoming the preferred choice of fire protection professionals throughout the world.



SYSTEM CYLINDERS

The models BFR-5, BFR-10, BFR-15 and BFR-20 cylinders are designated by flow point capacity (so the BFR-5 supports five (5) flow points) instead of the amount of agent they hold. Recharge is available in 5 and 10 flow point containers so there's never a chance of error.



BFR-5

BFR-10

BFR-15

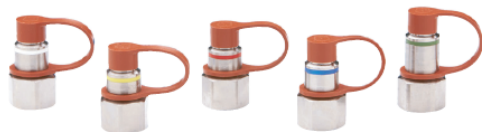
BFR-20

BUCKEYE SHIELDED CABLE

The *Kitchen Mister* Shielded Cable Interface is used to connect Buckeye Shielded Cable to any standard ½ inch conduit connection device. The use of Buckeye Shielded Cable instead of conduit and corner pulleys for connecting the gas valve, remote pull station, and fusible link line to the Systems Releasing Module reduces installation time by up to 50%.

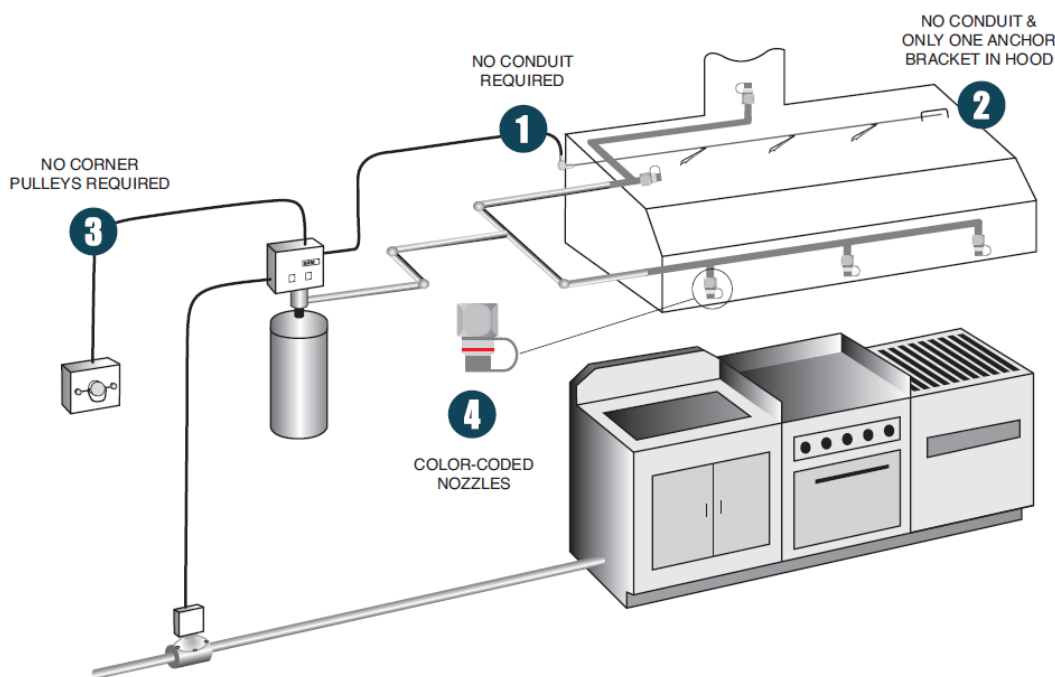


Also available:
Wet Chemical Class
K Portable, used in
conjunction with the
Kitchen Mister System.



DISCHARGE NOZZLES

All five (5) *Kitchen Mister* nozzles come equipped with a color identification band, red, blue, green, white and yellow. This allows for easy identification of the nozzle even when it's installed in difficult locations such as a duct or plenum area. The nozzle is also stamped with its model number.



- 1 NO CONDUIT REQUIRED**
By using Buckeye Shielded Cable no conduit is required for system inputs/outputs. Buckeye Shielded Cable is Listed for the gas valve, detection line, and pull station.
- 2 NO CONDUIT & ONLY ONE ANCHOR BRACKET IN HOOD**
The *Kitchen Mister* System eliminates the need for conduit in the plenum and requires only one anchor bracket in the exhaust hood.
- 3 NO CORNER PULLEYS REQUIRED**
Buckeye Shielded Cable eliminates the need for corner pulleys, making installation easy and fast.
- 4 COLOR-CODED NOZZLES**
All *Kitchen Mister* nozzles have a unique color band for easy identification.

SIMPLICITY OF DESIGN

The constant changes and complicated requirements of most restaurant systems have made design and installation errors a concern of fire protection professionals globally.

The uncomplicated design of the *Kitchen Mister* System all but eliminates design and installation errors by combining common sense features and eliminating confusing design requirements.

FASTER INSTALLATIONS

By eliminating the labor-intensive task of installing conduit, corner pulleys, and detector brackets, the *Kitchen Mister* System dramatically reduces installation time.

The *Kitchen Mister* System is approved for use with Buckeye Shielded Cable or traditional conduit and corner pulleys for all system inputs and outputs. This, combined with the elimination of conduit and fusible link brackets in the plenum area, makes installing the *Kitchen Mister* System quick and easy.

DEALER FRIENDLY FEATURES

- Uncomplicated system design eliminates design and installation errors.
- Installation time significantly reduced.
- Innovative design eliminates conduit and corner pulleys.
- Advanced detection system installs quickly and easily.
- Color-coded nozzles for easy identification.
- Flexible piping requirements allow for unlimited system configurations.
- Best coverage in industry.
- Online & face to face training.

LISTINGS AND APPROVALS

- Listed to Underwriters Laboratories, Inc. Standard UL-300
- Listed to Underwriters Laboratories of Canada, Inc.
- Approved by the New York City Fire Department COA #5550
- Complies with NFPA-96 and NFPA-17A Standards
- CE Compliant



IRP FIRE & SAFETY LTD.

A member of the IRP Group of Companies

CONTACT US

For more information

Address: #119 Boundary Road, San Juan.

Tel: (868) 674-0693/ 0694/ 3632

Email: CSR.FSE@irpltd.com

Website: www.irpltd.com





IRP FIRE & SAFETY LTD.

A member of the IRP Group of Companies

CG2 & MA2 Series

Clean Agent Fire Suppression Systems

HFC-227ea



You need a automatic fire suppression system because:

- ▶ Continuous protection.
- ▶ Automatic operation.
- ▶ Manual operation if required.
- ▶ Peace of mind!
- ▶ Often detects and suppresses a fire before you know!
- ▶ Why would you NOT protect your boat and it's occupants?

A CLEAN AGENT SYSTEM

- ▶ Featuring the HFC-227ea with coverage from 25-1,500 ft³ (0.7-28.3 m³) for engine rooms, machinery spaces, and other enclosed spaces for Class B fires. Factory Mutual and USCG Approved - Clean Agents are approved by all notified bodies.



SELECTING YOUR SYSTEM

1. Choose either the CG2 or MA2 Series.
2. Determine the volume of your engine compartment in cubic feet or cubic meters, L x W x H. For after-market installations, the gross volume MUST be used unless the boat manufacturer has attached a nameplate stating the volume of the fixed tanks to be deducted (CE and ISO 9094 requires NET volume calculation).
3. Based on steps 1 and 2, choose your model from the following charts. When in doubt, always choose the model that covers greater volume to ensure adequate protection.

Example: MA20200227-BL = automatic discharge with optional manual discharge when used with a Fireboy Manual Discharge Cable, 200 cubic feet of coverage.

4. When choosing the MA2 Series, select the length of Manual Discharge Cable required (see page 2).

READY TO INSTALL

Each Fireboy system comes complete with a powder coated steel shelf bracket system, status indicator light, and owner's manual.



WARNING: Diesel engines require the installation of a Fireboy Engine Shutdown System.

See separate sheet.

3M™ NOVEC™ 1230 Fire Protection Fluid Systems also available.

GA Series also available up to 3,000 ft³ (85 m³)

CG2 SERIES

- ▶ Automatic discharge only (@ 175°F / 79°C)
- ▶ Engine rooms up to 1,000 ft³ (28.3 m³)
- ▶ Vertical or horizontal mounting
- ▶ Heavy-duty mounting bracket
- ▶ Helm display

MA2 SERIES

- ▶ Automatic and manual discharge when used with a Fireboy Manual Discharge Cable (sold separately)
- ▶ Engine rooms up to 1,500 ft³ (42.5 m³)
- ▶ Vertical or horizontal mounting
- ▶ Heavy-duty mounting bracket
- ▶ Helm display



CG2 SERIES MODEL SELECTION CHART - CLEAN AGENT HFC-227ea

► Designed for engine rooms and machinery spaces up to 1,000 ft³ (28.3 m³), this automatic discharge series comes ready for vertical or horizontal mounting. Bracket and helm display included. Discharges at 175°F (79°C) or optional 155°F (68°C).

| MODEL NUMBER | VOLUME PROTECTED | | DIAMETER | | TOTAL HEIGHT | | AGENT WEIGHT | | SHIPPING WEIGHT | | SYSTEM PRESSURE |
|---------------------|------------------|----------------|----------|-----|--------------|-----|--------------|------|-----------------|------|-----------------|
| | ft ³ | m ³ | in | mm | in | mm | lbs | kgs | lbs | kgs | psi (@70° F) |
| CG20025227-B | 25 | 0.7 | 3.3 | 85 | 9.5 | 241 | 1.1 | 0.5 | 5 | 2.4 | 240 |
| CG20050227-B | 50 | 1.4 | 3.3 | 85 | 13.3 | 338 | 2.2 | 1 | 8 | 3.7 | 240 |
| CG20075227-B | 75 | 2.1 | 4.3 | 110 | 15.6 | 396 | 3.2 | 1.5 | 13 | 6 | 240 |
| CG20100227-B | 100 | 2.8 | 4.3 | 110 | 15.6 | 396 | 4.3 | 2 | 14 | 6.4 | 240 |
| CG20125227-B | 125 | 3.5 | 4.3 | 110 | 15.6 | 396 | 5.4 | 2.5 | 15 | 6.9 | 240 |
| CG20150227-B | 150 | 4.3 | 5.1 | 130 | 17.2 | 436 | 6.5 | 2.9 | 20 | 9.2 | 240 |
| CG20175227-B | 175 | 4.9 | 5.1 | 130 | 17.2 | 436 | 7.6 | 3.4 | 21 | 9.6 | 240 |
| CG20200227-B | 200 | 5.7 | 5.1 | 130 | 17.2 | 436 | 8.6 | 3.9 | 22 | 10 | 240 |
| CG20225227-B | 225 | 6.4 | 6.3 | 160 | 17.3 | 439 | 9.7 | 4.4 | 29 | 13.2 | 240 |
| CG20250227-B | 250 | 7 | 6.3 | 160 | 17.3 | 439 | 10.8 | 4.9 | 30 | 13.6 | 240 |
| CG20275227-B | 275 | 7.8 | 6.3 | 160 | 17.3 | 439 | 11.9 | 5.4 | 31 | 14.1 | 240 |
| CG20300227-B | 300 | 8.5 | 6.3 | 160 | 17.3 | 439 | 13 | 5.9 | 32 | 14.5 | 240 |
| CG20325227-B | 325 | 9.2 | 7.1 | 180 | 17.2 | 437 | 14 | 6.4 | 37 | 16.9 | 240 |
| CG20350227-B | 350 | 10 | 7.1 | 180 | 17.2 | 437 | 15.1 | 6.9 | 38 | 17.4 | 240 |
| CG20375227-B | 375 | 10.6 | 7.1 | 180 | 17.2 | 437 | 16.2 | 7.4 | 39 | 17.8 | 240 |
| CG20400227-B | 400 | 11.3 | 7.1 | 180 | 19.4 | 493 | 17.3 | 7.9 | 43 | 19.5 | 240 |
| CG20450227-B | 450 | 12.7 | 7.1 | 180 | 19.4 | 493 | 19.4 | 8.8 | 45 | 20.4 | 240 |
| CG20500227-B | 500 | 14.1 | 7.1 | 180 | 27.4 | 696 | 21.6 | 9.8 | 55 | 24.8 | 240 |
| CG20550227-B | 550 | 15.6 | 7.1 | 180 | 27.4 | 696 | 23.8 | 10.8 | 57 | 25.7 | 240 |
| CG20600227-B | 600 | 17 | 7.1 | 180 | 27.4 | 696 | 25.9 | 11.8 | 60 | 27 | 240 |
| CG20650227-B | 650 | 18.4 | 7.1 | 180 | 27.4 | 696 | 28.1 | 12.8 | 62 | 28.3 | 240 |
| CG20700227-B | 700 | 19.8 | 7.1 | 180 | 27.4 | 696 | 30.2 | 13.7 | 64 | 29.2 | 240 |
| CG20750227-B | 750 | 21.2 | 7.1 | 180 | 33.3* | 846 | 32.4 | 14.7 | 70 | 31.6 | 360 |
| CG20800227-B | 800 | 22.6 | 7.1 | 180 | 33.3* | 846 | 34.6 | 15.7 | 73 | 33 | 360 |
| CG20850227-B | 850 | 24 | 7.1 | 180 | 33.3* | 846 | 36.7 | 16.7 | 76 | 34.3 | 360 |
| CG20900227-B | 900 | 25.5 | 7.1 | 180 | 33.3* | 846 | 38.9 | 17.7 | 77 | 35.1 | 360 |
| CG20950227-B | 950 | 26.9 | 7.1 | 180 | 33.3* | 846 | 41 | 18.7 | 80 | 36.4 | 360 |
| CG21000227-B | 1000 | 28.3 | 10 | 254 | 21.4 | 544 | 43.2 | 19.6 | 93 | 42.2 | 360 |

*Note height change - low profile version listed below.

LOW PROFILE MODELS

| | | | | | | | | | | | |
|---------------|-----|------|----|-----|------|-----|------|------|----|------|-----|
| CG20750227-B4 | 750 | 21.2 | 10 | 254 | 21.4 | 544 | 32.4 | 14.7 | 80 | 36.3 | 360 |
| CG20800227-B4 | 800 | 22.6 | 10 | 254 | 21.4 | 544 | 34.5 | 15.6 | 83 | 37.6 | 360 |
| CG20850227-B4 | 850 | 24 | 10 | 254 | 21.4 | 544 | 36.7 | 16.7 | 86 | 39 | 360 |
| CG20900227-B4 | 900 | 25.5 | 10 | 254 | 21.4 | 544 | 38.9 | 17.7 | 88 | 39.9 | 360 |
| CG20950227-B4 | 950 | 26.9 | 10 | 254 | 21.4 | 544 | 41 | 18.7 | 91 | 41.3 | 360 |

MANUAL DISCHARGE CABLES

Fireboy High-Temperature Manual Discharge Cables allow for the manual discharge of an MA2 or GA system. Meets the U.S. Coast Guard flame-test guidelines. Use the shortest possible. Maximum 1440° of total bends.

| MODEL | Ft | M | MODEL | Ft | M |
|-----------|----|------|-------------|-----|------|
| E-4209-06 | 6 | 1.8 | E-4209-36 | 36 | 10.4 |
| E-4209-08 | 8 | 2.9 | E-4209-40 | 40 | 12.1 |
| E-4209-10 | 10 | 3 | E-4209-45 | 45 | 13.6 |
| E-4209-12 | 12 | 3.6 | E-4209-50 | 50 | 15.2 |
| E-4209-14 | 14 | 4.2 | E-4209-55* | 55 | 16.7 |
| E-4209-16 | 16 | 4.8 | E-4209-60 | 60 | 18.2 |
| E-4209-18 | 18 | 5.4 | E-4209-65* | 65 | 19.7 |
| E-4209-20 | 20 | 6 | E-4209-70* | 70 | 21.2 |
| E-4209-22 | 22 | 6.6 | E-4209-75* | 75 | 22.8 |
| E-4209-24 | 24 | 7.2 | E-4209-80* | 80 | 24.3 |
| E-4209-26 | 26 | 7.9 | E-4209-85* | 85 | 25.8 |
| E-4209-28 | 28 | 8.5 | E-4209-90* | 90 | 27.3 |
| E-4209-30 | 30 | 9.1 | E-4209-95* | 95 | 28.8 |
| E-4209-34 | 34 | 10.3 | E-4209-100* | 100 | 30 |

Fireboy High-Temperature Manual Discharge Cables are fire-resistant and are required for all



MA2 and GA Series installations. Sold separately. Shown to the right with optional angle adapter. CAA-0285-01



READY TO INSTALL

Each Fireboy system includes a heavy-duty powder coated steel shelf bracket system, helm display and owner's manual.



MA2 SERIES MODEL SELECTION CHART - CLEAN AGENT HFC-227ea

- Ideal for engine rooms up to 1,500 ft³ (42.5 m³). Manual discharge when used with Fireboy Manual Discharge Cable which is sold separately.
Vertical or horizontal mounting. Bracket and helm light included. Discharges at 175°F (79°C) or optional 155°F (68°C).

| MODEL NUMBER | VOLUME PROTECTED | | DIAMETER | | TOTAL HEIGHT | | AGENT WEIGHT | | SHIPPING WEIGHT | | SYSTEM PRESSURE (@70° F) psi |
|----------------------|------------------|----------------|----------|-----|--------------|-----|--------------|------|-----------------|------|---------------------------------|
| | ft ³ | m ³ | in | mm | in | mm | lbs | kgs | lbs | kgs | |
| MA20025227-BL | 25 | 0.7 | 3.3 | 85 | 9.5 | 241 | 1.1 | 0.5 | 5 | 2.4 | 240 |
| MA20050227-BL | 50 | 1.4 | 3.3 | 85 | 13.3 | 338 | 2.2 | 1 | 8 | 3.7 | 240 |
| MA20075227-BL | 75 | 2.1 | 4.3 | 110 | 15.6 | 396 | 3.2 | 1.5 | 13 | 6 | 240 |
| MA20100227-BL | 100 | 2.8 | 4.3 | 110 | 15.6 | 396 | 4.3 | 2 | 14 | 6.4 | 240 |
| MA20125227-BL | 125 | 3.5 | 4.3 | 110 | 15.6 | 396 | 5.4 | 2.5 | 15 | 6.9 | 240 |
| MA20150227-BL | 150 | 4.3 | 5.1 | 130 | 17.2 | 436 | 6.5 | 2.9 | 20 | 9.2 | 240 |
| MA20175227-BL | 175 | 4.9 | 5.1 | 130 | 17.2 | 436 | 7.6 | 3.4 | 21 | 9.6 | 240 |
| MA20200227-BL | 200 | 5.7 | 5.1 | 130 | 17.2 | 436 | 8.6 | 3.9 | 22 | 10 | 240 |
| MA20225227-BL | 225 | 6.4 | 6.3 | 160 | 17.3 | 439 | 9.7 | 4.4 | 29 | 13.2 | 240 |
| MA20250227-BL | 250 | 7 | 6.3 | 160 | 17.3 | 439 | 10.8 | 4.9 | 30 | 13.6 | 240 |
| MA20275227-BL | 275 | 7.8 | 6.3 | 160 | 17.3 | 439 | 11.9 | 5.4 | 31 | 14.1 | 240 |
| MA20300227-BL | 300 | 8.5 | 6.3 | 160 | 17.3 | 439 | 13 | 5.9 | 32 | 14.5 | 240 |
| MA20325227-BL | 325 | 9.2 | 7.1 | 180 | 17.2 | 437 | 14 | 6.4 | 37 | 16.9 | 240 |
| MA20350227-BL | 350 | 10 | 7.1 | 180 | 17.2 | 437 | 15.1 | 6.9 | 38 | 17.4 | 240 |
| MA20375227-BL | 375 | 10.6 | 7.1 | 180 | 17.2 | 437 | 16.2 | 7.4 | 39 | 17.8 | 240 |
| MA20400227-BL | 400 | 11.3 | 7.1 | 180 | 19.4 | 493 | 17.3 | 7.9 | 43 | 19.5 | 240 |
| MA20450227-BL | 450 | 12.7 | 7.1 | 180 | 19.4 | 493 | 19.4 | 8.8 | 45 | 20.4 | 240 |
| MA20500227-BL | 500 | 14.1 | 7.1 | 180 | 27.4 | 696 | 21.6 | 9.8 | 55 | 24.8 | 240 |
| MA20550227-BL | 550 | 15.6 | 7.1 | 180 | 27.4 | 696 | 23.8 | 10.8 | 57 | 25.7 | 240 |
| MA20600227-BL | 600 | 17 | 7.1 | 180 | 27.4 | 696 | 25.9 | 11.8 | 60 | 27 | 240 |
| MA20650227-BL | 650 | 18.4 | 7.1 | 180 | 27.4 | 696 | 28.1 | 12.8 | 62 | 28.3 | 240 |
| MA20700227-BL | 700 | 19.8 | 7.1 | 180 | 27.4 | 696 | 30.2 | 13.7 | 64 | 29.2 | 240 |
| MA20750227-BL | 750 | 21.2 | 7.1 | 180 | 33.3* | 846 | 32.4 | 14.7 | 70 | 31.6 | 360 |
| MA20800227-BL | 800 | 22.6 | 7.1 | 180 | 33.3* | 846 | 34.5 | 15.6 | 73 | 33 | 360 |
| MA20850227-BL | 850 | 24 | 7.1 | 180 | 33.3* | 846 | 36.7 | 16.7 | 76 | 34.3 | 360 |
| MA20900227-BL | 900 | 25.5 | 7.1 | 180 | 33.3* | 846 | 38.9 | 17.7 | 77 | 35.1 | 360 |
| MA20950227-BL | 950 | 26.9 | 7.1 | 180 | 33.3* | 846 | 41 | 18.7 | 80 | 36.4 | 360 |
| MA21000227-BL | 1000 | 28.3 | 10 | 254 | 21.4 | 544 | 43.2 | 19.6 | 93 | 42.2 | 360 |
| MA21050227-BL | 1050 | 29.7 | 10 | 254 | 21.4 | 544 | 45.3 | 20.5 | 96 | 43.5 | 360 |
| MA21100227-BL | 1100 | 31.1 | 10 | 254 | 21.4 | 544 | 47.5 | 21.6 | 99 | 44.9 | 360 |
| MA21150227-BL | 1150 | 33 | 10 | 254 | 27.5 | 699 | 49.7 | 22.6 | 108 | 49 | 360 |
| MA21200227-BL | 1200 | 34 | 10 | 254 | 27.5 | 699 | 51.8 | 23.6 | 111 | 50.3 | 360 |
| MA21250227-BL | 1250 | 35.4 | 10 | 254 | 27.5 | 699 | 54 | 24.5 | 113 | 51.3 | 360 |
| MA21300227-BL | 1300 | 36.8 | 10 | 254 | 27.5 | 699 | 56.1 | 25.4 | 116 | 52.6 | 360 |
| MA21350227-BL | 1350 | 38.2 | 10 | 254 | 27.5 | 699 | 58.3 | 26.5 | 119 | 54 | 360 |
| MA21400227-BL | 1400 | 39.6 | 10 | 254 | 27.5 | 699 | 60.5 | 27.5 | 121 | 54.9 | 360 |
| MA21450227-BL | 1450 | 41 | 10 | 254 | 27.5 | 699 | 62.6 | 28.5 | 124 | 56.2 | 360 |
| MA21500227-BL | 1500 | 42.5 | 10 | 254 | 27.5 | 699 | 64.8 | 29.5 | 126 | 57.2 | 360 |

*Note height change - low profile version listed below.

| LOW PROFILE MODELS | | | | | | | | | | | |
|--------------------|-----|------|----|-----|------|-----|------|------|----|------|-----|
| MA20750227-BL4 | 750 | 21.2 | 10 | 254 | 21.4 | 544 | 32.4 | 14.7 | 80 | 36.3 | 360 |
| MA20800227-BL4 | 800 | 22.6 | 10 | 254 | 21.4 | 544 | 34.5 | 15.6 | 83 | 37.6 | 360 |
| MA20850227-BL4 | 850 | 24 | 10 | 254 | 21.4 | 544 | 36.7 | 16.7 | 86 | 39 | 360 |
| MA20900227-BL4 | 900 | 25.5 | 10 | 254 | 21.4 | 544 | 38.9 | 17.7 | 88 | 39.9 | 360 |
| MA20950227-BL4 | 950 | 26.9 | 10 | 254 | 21.4 | 544 | 41 | 18.7 | 91 | 41.3 | 360 |



Bracket for larger CG/MA extinguish-ers shown above.

HALOTRON® CLEAN AGENT PORTABLE FIRE EXTINGUISHERS

- Model 70551 - 5 lb portable with a 5BC rating; includes a mounting bracket
- Model 71100 - 11 lb portable with a 1A10BC rating; less mounting bracket
- 11 lb mounting bracket 700228 - *sold separately*
- Two-year limited warranty
- Available in North America only



ON BOARD, ON GUARD!



THE FIREBOY ADVANTAGE

TOTAL FLOODING, CLEAN AGENT FIRE EXTINGUISHER SYSTEMS

U.S. Coast Guard studies show that approximately 90% of all marine fires start in the engine compartment. The same studies show that only one in ten marine fires is successfully extinguished with typical dry-chemical portable fire extinguishers due to the inherent difficulties of fighting a fire manually. In addition, dry-chemical fire extinguishers leave behind a powder that can damage the engine and sensitive electronic equipment.

Since pioneering the use of Halon systems in the early 1970's, Fireboy has designed safe and effective engine room fire protection with no water or powdery residue. All systems are heat activated to discharge the clean agent gas automatically at 175°F (79°C) with no operator intervention required. With a Fireboy system, the fire extinguishing agent is released much faster than any possible crew response, resulting in a faster fire-out time and less damage.

CONSTANT PROTECTION, NO HARMFUL RESIDUE

- ▶ Discharge is automatic at 175°F (79°C) or optional 155°F (68°C) for round-the-clock engine room fire protection
- ▶ Many marine insurance providers offer a discount to boaters who install a fixed fire extinguisher system (contact your insurer for details)
- ▶ Total flooding of the engine compartment in less than 10 seconds for fast smothering of the fire
- ▶ 3M Novec 1230 Fire Protection Fluid and HFC-227ea leave no harmful residue to clean up
- ▶ 3 year limited warranty
- ▶ All steel refillable cylinders (except systems discharged in a fire)
- ▶ Helm display LED "charged/discharged" status indicator panel included (see photo on page 2)
- ▶ Easy to read color coded pressure gauge on cylinder also identifies "charged/discharged" status
- ▶ Coverage from 25 ft³ to 1,500 ft³ in a broad array of increments provides maximum coverage at lowest cost
- ▶ Integrated shelf bracket mounting system (see photo on page 2)
- ▶ Safety lockout design to minimize accidental discharge during installation and maintenance
- ▶ Rugged industrial designed pressure gauge insures trouble free performance
- ▶ International system approvals (FM, USCG, CE, RINA, BV)
- ▶ HFC-227ea (Heptafluoropropane) and 3M Novec 1230 Fire Protection Fluid clean extinguishing agents are approved for marine use worldwide (EPA SNAP, European)
- ▶ Approved for Class B fires in engine rooms, machinery spaces and similar industrial applications

FIREBOY® - XINTEX® fireboy-xintex.com
A **Darley** Company

CONTACT US

Address: #119 Boundary Road, San Juan, Trinidad
Tel: (868) 674-0693/ 0694/ 3632
Email: CSR.FSE@irpltd.com
Website: www.irpltd.com



IRP FIRE & SAFETY LTD.

A member of the IRP Group of Companies



IRP FIRE & SAFETY LTD.

A member of the IRP Group of Companies

Home Firefighting Cart Systems



- Davey Firefighter® 5+ Twin Impeller Fire Pump
- Ultra-Reliable 14hp Subaru Industrial OHV Engine
- Davey Firefighter™ 5+ Twin Impeller Wet End
- 1.5" Heavy Duty Steel Roll Cage
- 1.5" Steel Handle w/Suction Hose Rack
- Double Powder Coated Finish
- Ballistic Nylon Hose & Equipment Storage Bag
- 12.5" Pneumatic All-Terrain Tires
- 1.5" Male Camlock Suction Fitting
- 3-Way Fire Hose Discharge
- Adjustable Relief Valve w/Pressure Gauge
- Hard Coated Aluminium Caps
- 100' of Deluxe Fire Hose
- 16' Flexible PVC Suction Hose
- Brass Foot Valve & Strainer
- Aluminium Fog/Stream Pistol Grip Water Nozzle

Our Home Firefighting™ Cart System comes fully equipped with everything you need to Defend Your Defensible Space™ before the fire department arrives. Manoeuvres easily up and down rough terrain with minimal effort thanks to our exclusive balanced cart system that allows for moving the system with only one hand!

Built with a high-performance 14hp Subaru Industrial OHV engine and a Davey Firefighter® 5+ Twin Impeller wet end delivering 90 GPM and pressures over 170 PSI (>390' of vertical lift). Featuring professional forestry fire hose, ruggedized professional firefighting nozzles and a professional D-handle shutoff with pistol grip for better control of the fire hose (plain water models only). Our custom automatic pressure relief system protects the pump from overheating.

www.irpltd.com

Address: 119 Boundary Road, San Juan,
Trinidad W.I

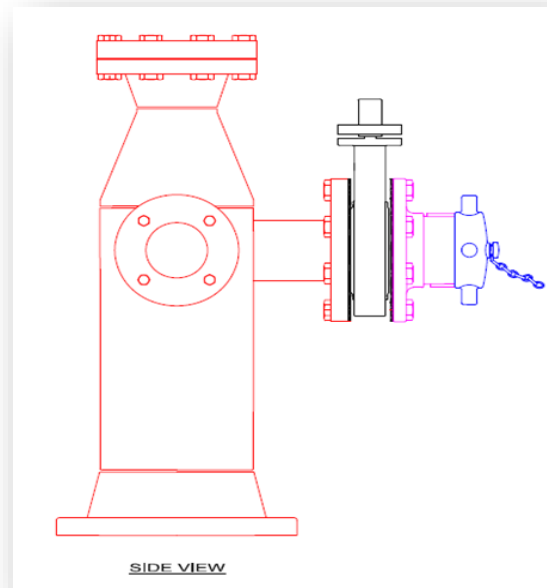
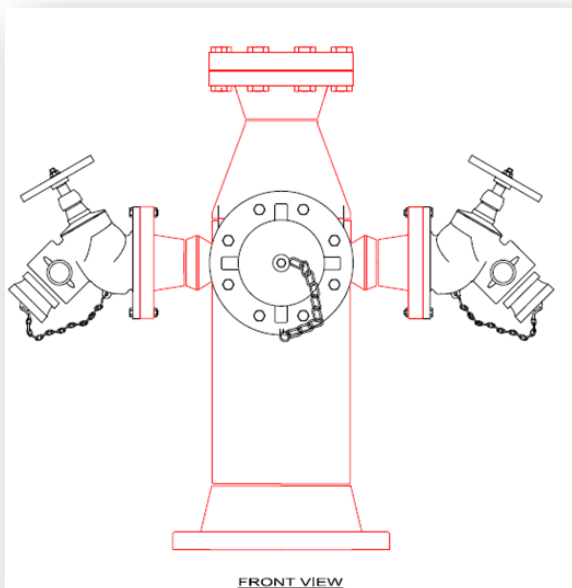
Phone: 674-0693 | 0694 | 3632.

Fax: 674-0736 | 675-3873

Email: csr.fse@irpltd.com | fb.com

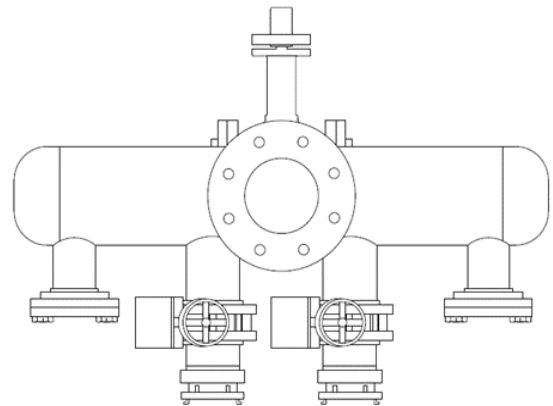
8" WET BARREL HYDRANTS WITH TWO (2) 2 1/2" BIB NOSE HYDRANT VALVE COMPLETE WITH ONE (1) PUMPER NOZZLE

- No. 8" Wet Barrel Hydrants Comprises of:
- Two (2) 2 1/2" Bib Nose Hydrant Valve and One (1) One pumper nozzle
- One (1) year Warranty From Delivery of Items to Client's Warehouse/ Site
- Post type wet barrel design
- Operating nut available in wide variety of shapes and sizes-open left or right
- Field replaceable hose and pumper nozzles
- Hose and pumper nozzles have large radius, full flow openings for low friction loss
- All valves used are UL Listed and FM Approved
- Perform a non-destructive test (dye penetrant) on all welds of the hydrant
- Apply hot dipped galvanized coatings externals and internals of the hydrant
- Blast clean hydrant's externals and internals to SSPC SP10
- Coat externals of hydrant either "Yellow" or "International Red" Industrial Grade Paint
- Hydrant should be pressure tested at 225psi for approximately 2.5 minutes



6" WET BARREL HIGH FLOW HYDRANTS

- No. 6" Wet Barrel Hydrants Comprises of:
- Four (4) Outlets: Two (2) Spare Outlets and Two (2) Outlets Complete with a 5" Storz Fitting
- One (1) year Warranty From Delivery of Items to Client's Warehouse/ Site
- Post type wet barrel design
- Operating nut available in wide variety of shapes and sizes-open left or right
- Hose and pumper nozzles have large radius, full flow openings for low friction loss
- All valves used are UL Listed and FM Approved
- Perform a non-destructive test (dye penetrant) on all welds of the hydrant
- Apply hot dipped galvanized coatings externals and internals of the hydrant
- Blast clean hydrant's externals and internals to SSPC SP10
- Coat externals of hydrant either "Yellow" or "International Red" Industrial Grade Paint
- Hydrant should be pressure tested at 225psi for approximately 2.5 minutes

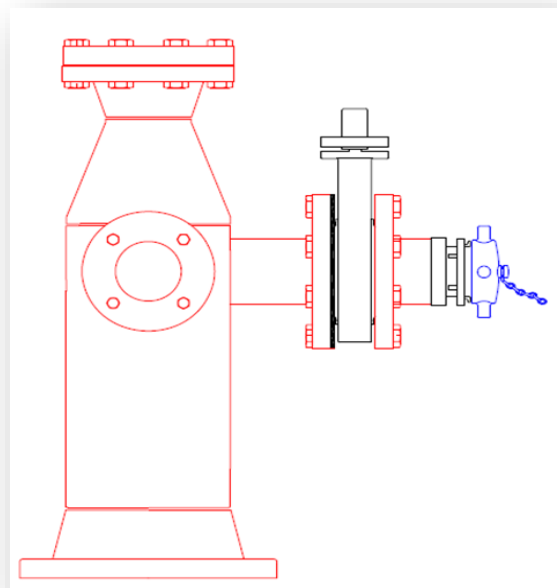
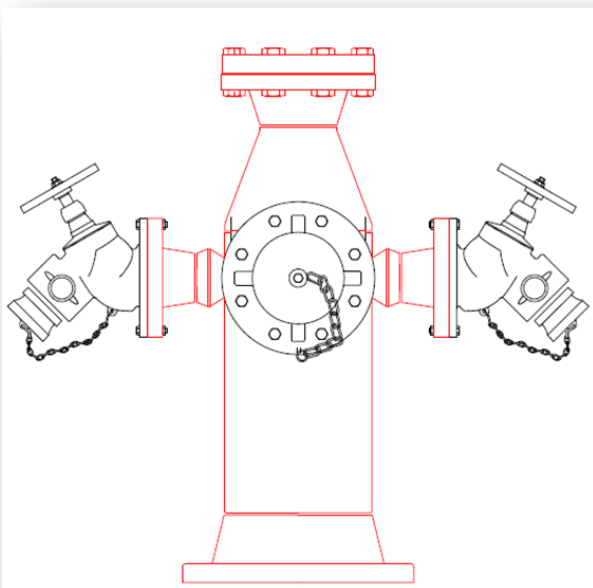


TOP VIEW



8" WET BARREL HYDRANTS WITH TWO (2) 2 1/2" BIB NOSE HYDRANT VALVE COMPLETE WITH ONE (1) PUMPER NOZZLE

- No. 8" Wet Barrel Hydrants Comprises of:
- Two (2) 2 1/2" Bib Nose Hydrant Valve and One (1) One pumper nozzle
- One (1) year Warranty From Delivery of Items to Client's Warehouse/ Site
- Post type wet barrel design
- Operating nut available in wide variety of shapes and sizes-open left or right
- Field replaceable hose and pumper nozzles
- Hose and pumper nozzles have large radius, full flow openings for low friction loss
- All valves used are UL Listed and FM Approved
- Adaptors and Caps should follow BS336
- Perform a non-destructive test (dye penetrant) on all welds of the hydrant
- Apply hot dipped galvanized coatings externals and internals of the hydrant
- Blast clean hydrant's externals and internals to SSPC SP10
- Coat externals of hydrant either "Yellow" or "International Red" Industrial Grade Paint
- Hydrant should be pressure tested at 225psi for approximately 2.5 minutes





ABOUT

Globe invented turnout gear 130 years ago. Today they still deliver the most advanced, best-fitting, and longest-lasting protection by listening to customers, creating breakthrough designs, and applying the engineering skills of the nation's most trusted manufacturer.



FEATURING GLOBE MSA TURNOUT GEAR

Globe offers a wide range of turnout gear from the Classix, Athletix, Xtreme, Relaxation and other models. They can be ordered and customised based on the Fire Services Risk Assessment.

Certified to NFPA 1971
(Structural Fire Fighting)



CONTACT US FOR MORE INFORMATION

674-0693/ 0694 / 3692

csr.fse@irpltd.com

www.irpltd.com

119 Boundary Road, San Juan,
Trinidad W.I.



IRP FIRE & SAFETY LTD.

A member of the IRP Group of Companies

FIRE SERVICES





ABOUT

MSA is an organization fully committed to protecting the health and safety of our customers. They spend countless hours developing, testing, and evaluating products to ensure achieved goals. MSA is the leading supplier of products that concerns: Construction, Fire Services, General Industry, Mining, Oil & Gas and Utilities.



FEATURING SCBA - MSA G1

The G1 SCBA offers integrated and enhanced solutions to exceed your needs today as well as years into the future. MSA's long-standing commitment to the fire service industry began nearly 100 years ago. Our goal is to provide dependable, highquality products, instruments and service that will help to ensure a safe return home. MSA's extensive knowledge and expertise has helped to harness new technologies to produce exceptional protective equipment.

**Certified to NFPA 1971
(Structural Fire Fighting)**

Approvals
• NFPA 1981-2013
• NFPA 1982-2013



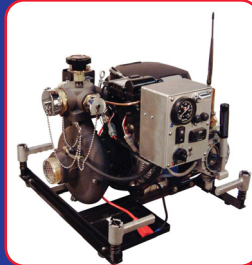
ABOUT

Darley combines its unique strength as a builder of both pumps and apparatus by offering a line of pump systems. A wide variety of pump systems are available including top and side operated, mid-ship and PTO driven pumps. The systems often include specialized features such as "Vision Series" panels complete with "one touch controls". All of their systems are designed to be easy to operate and easy to maintain.

FEATURING 2BE 21H PORTABLE PUMP

Features

- Aluminum alloy casing
- Discharge valve
- Sulfuric anodized aluminum alloy gear case and engine adapter



- Bronze impeller and wear ring
- Mechanical seal
- Built-in discharge check valve
- Adjustable discharge valve
- 3" NPT suction
- 1-2½" NPT and 2-1½" NPT or 1-2½" NPT discharge

(Many suction and discharge options are available)



ABOUT

Pierce builds on commercial chassis from five leading manufacturers: Freightliner, International, Kenworth, Peterbilt, and Ford. Their range of products starts with a robust stock program with limited option availability, allowing for rapid delivery and competitive pricing. This offering expands to a configurable build-to-order program that is highly customizable.

FEATURING PIERCE FORD COMMERCIAL CHASSIS TRUCKS



Pierce's commercial flexibility streamlines production and engineering for smaller, rural departments, while still offering product diversity for larger municipal, government, and international customers.



ABOUT

Commitment to research and development, along with quality manufacturing, has resulted in a line of products known for their outstanding safety, durability and performance. Because of this commitment, HURST Jaws of Life is the most trusted brand in the industry and our rescue systems have been instrumental in saving hundreds of thousands of lives throughout 45 years.



FEATURING S 799E2 CUTTER

This eDRAULIC cutter can't wait to get its blades around today's bigger, stronger, meaner steel with an 8.03-inch opening. It has no problems with modern B posts and tool swing challenges are not a problem when cutting A and B posts either just cut them easily at a comfortable perpendicular angle. This cutter gets an NFPA rating of 9 in all categories, making it the best in class.

FIRE SERVICES



IRP FIRE & SAFETY LTD.

A member of the IRP Group of Companies

Message from the CEO

IRP Fire & Safety Limited is a member of the IRP Group of companies. Incorporated in 1974 we have served the Trinidad and Tobago market with distinction and integrity for over 45 years. We are the leading supplier of Fire, Safety, Marine and Environmental products to many local and regional industries. We have established comprehensive relationships with our clients by learning their environments, challenges and goals, to offer tangible solutions. We continue to manage our business around the evolving needs of our clients, allowing us to be at the vanguard of change and deliver value.

Our staff is committed to delivering the highest quality products, while providing supreme service to our valued customers. As we move forward, we continue to assess our customer's needs and work assiduously to provide the best safety solutions.

Warmest Regards,
David Thompson
CEO IRP Fire & Safety Ltd.

TABLE OF CONTENTS

PAGE 2

- WHY IRP FIRE & SAFETY LTD?
- OUR CUSTOMER CARE CENTRE

PAGE 3

- SELF CONTAINED BREATHING APPRATUS
- MSA G1 SCBA – NFPA

PAGE 4

- MSA M1 SCBA - (EURO) EN

PAGE 5

- TURNOUT GEAR

PAGE 6

- THERMAL IMAGING CAMERA (TIC)
- EVOLUTION 6000 Basic TIC
- EVOLUTION 6000 Plus TIC
- EVOLUTION 6000 Xtreme TIC

PAGE 7

- FIREFIGHTING

PAGE 8

- HEAD PROTECTION
- MSA Cairns XF1
- Cairns 360S Structural Thermoplastic Fire Helmet
- Cairns 660C Metro Composite Fire Helmet
- Gallet F1 XF and Accessories

PAGE 9

- FIRE TRUCKS

PAGE 10

- PORTABLE GAS DETECTION INSTRUMENTS

PAGE 11

- EMERGENCY VEHICLE LIGHTING

PAGE 12

- IRP FIRE & SAFETY LTD. TRAINING CENTRE

CONTACT INFORMATION

Customer Care

CSR.FSE@irpltd.com
(868) 674-0693/0694/3632/ 290-5339

Export Services

exports@irpltd.com
(868) 674-0693/4

Technical Services

technical.services@irpltd.com
(868) 674-0693/4 Ext. 1414

Engineering & Projects

projects@irpltd.com
(868) 674-0693/4 Ext. 1409

CARIBBEAN

Aruba, Bonaire, Curacao, Antigua & Barbuda, Anguilla, Barbados, Bahamas, Dominica, Grenada, Jamaica, Montserrat, St Eustatius, St. Kitts & Nevis, St. Maarten, St. Lucia, St. Vincent & The Grenadines.

CENTRAL AMERICA

Belize

SOUTH AMERICA

Guyana
Suriname



WHY IRP FIRE & SAFETY LTD?

Procuring meaningful safety measures and products for fire, safety, environmental and marine safety is essential to creating a secure atmosphere and a high quality of work.

IRP Fire & Safety Ltd. has over forty-five years of experience and is the leading provider of these products and services. Our entire business is focused on delivering outstanding customer service.

Our Customer Care Department and our Technical Services department work hand in hand with our clients to fast track the design, programming and installation of diverse safety systems and products as well as our Engineering and Projects department, the agility of our warehouse and our follow up after installation to make sure your systems are maximized and functioning at their highest potential.



OUR CUSTOMER CARE CENTRE

Our commitment to providing the highest quality service to our clients makes us what we are today, the premier supplier of strategic customer care solutions. Customer care is key to our growth and continued profitability as it has been since our inception.

Comprised of trained technical and professionally certified staff, we stand behind our promise to deliver timely, quality service. We measure, monitor and report projects to ensure our performance exceeds industry standards.

SELF CONTAINED BREATHING APPRATUS



MSA G1 SCBA - NFPA



MSA G1 Self Contained Breathing Apparatus is designed solely with your safety and comfort in mind.

The G1 SCBA offers integrated and enhanced solutions to exceed your needs today as well as years into the future. MSA's long-standing commitment to the fire service industry began nearly 100 years ago. The goal is to provide dependable, highquality products, instruments and service that will help to ensure a safe return home. MSA's extensive knowledge and expertise has helped to harness new technologies to produce exceptional protective equipment.

Approvals

- NFPA 1981-2013
- NFPA 1982-2013

Markets: Fire Service, General Industry, Oil & Gas, Utilities

Applications: Confined Space, Firefighting, Search & Rescue

MSA M1 SCBA - (EURO) EN



The new M1 SCBA is a modular system breathing apparatus that can be reconfigured or upgraded whenever needed and conveniently in the field. It is also retrofittable with several different options. The M1 SCBA is fully customizable and can be configured to meet a broad range of firefighter needs. Buy per your budget needs and upgrade later directly in the field. Overall, the M1 breathing apparatus represents the most advanced, ergonomic and modular SCBA system on the market which was designed and developed side-by-side with firefighters. This new breathing apparatus platform includes several innovative and customizable features that help to enhance hygiene and improve comfort.

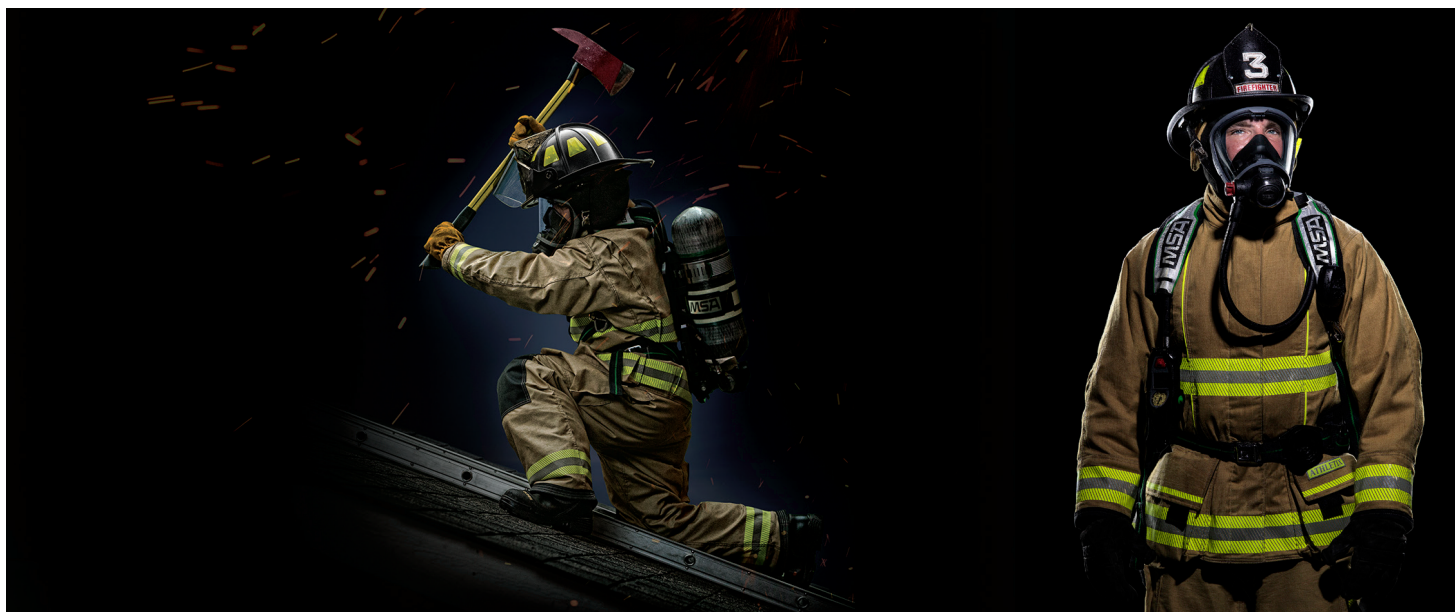
Approvals

- EN 137

Markets: Fire Service, General Industry, Oil & Gas, Utilities

Applications: Confined Space, Firefighting, Search & Rescue

TURNOUT GEAR



STANDARD FEATURES



- **DROP SHOULDER DESIGN** moves seam beyond the shoulder for improved reach and reduced coat ride up.
- **SHORTER COLLAR** for better interface with helmet.
- **DOUBLE SLEEVE WELLS with NOMEX®** wristers to keep water out and interface with all glove styles.
- **EXTENDED BACK** option allows you to choose to extend the back by 3" or 6" for additional overlap and lettering below the SCBA.
- **LINER ACCESS OPENING** for easy access between the layers.
- **DOUBLE-STITCHED SEAMS** with 8—10 stitches per inch for a longer service life.
- Your choice of **MATERIALS**: Outer Shells, Moisture Barriers, Thermal Barriers, Reinforcements, Reflective Trim, and Lettering
- Your choice of **OPTIONS**: Closures, Pockets, Holders/-Clips/Straps, Patches, and Sleeve Wells/Wristers.
- **MEN'S & WOMEN'S SIZES**: Chest, Length, and Sleeve.

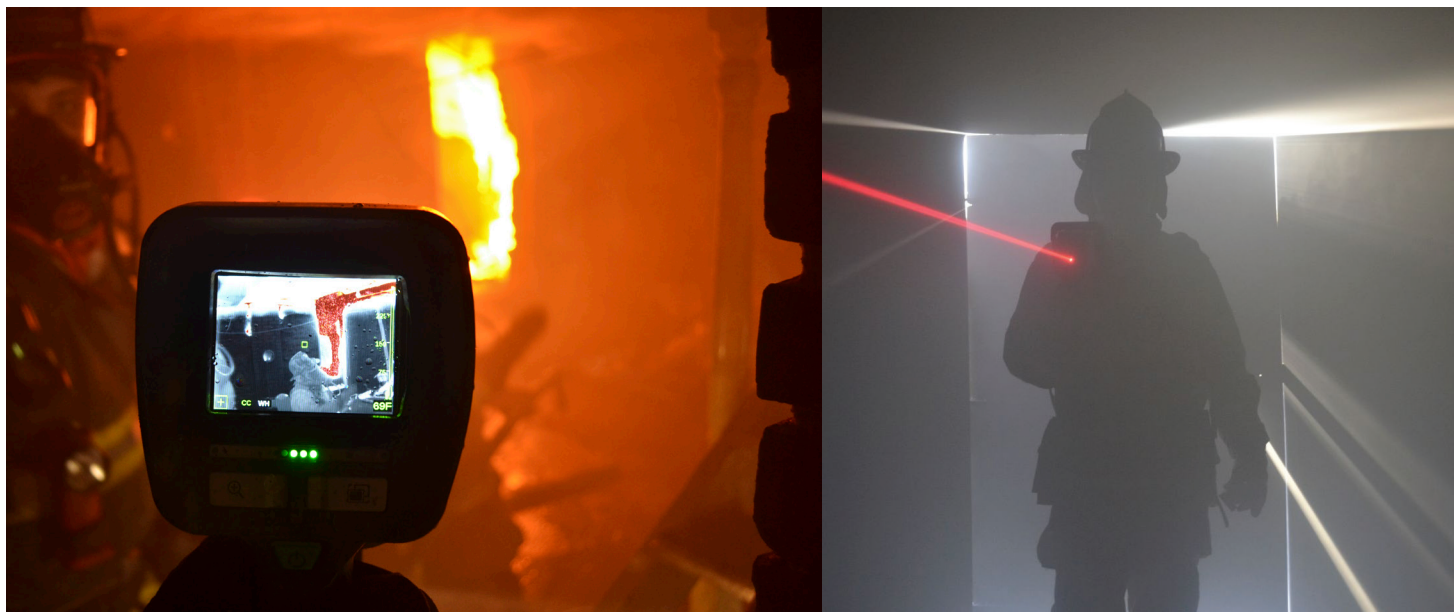
Globe offers a wide range of turnout gear from the Classix, Athletix, Xtreme, Relaxation and other models. They can be ordered and customised based on the Fire Services Risk Assessment.

**Certified to NFPA 1971
(Structural Fire Fighting)**

THERMAL IMAGING CAMERA (TIC)



MSA
The Safety Company



EVOLUTION 6000 Basic TIC



New Evolution 6000 Basic TIC from MSA is the most advanced and rugged thermal imaging camera ever built. New and enhanced features include best in class image quality, light weight, and laser pointer/flashlight. NFPA 1801-compliant model provides the industry's best mix of features to support the thermal imaging needs of every fire department, rescue organization, strike team, or HazMat crew. Operation includes NFPA Basic Mode; temperature readout is offered in Fahrenheit or Celsius.

Evolution 6000 Basic TIC for economy, durability, 320x240 image quality, standard flashlight/laser pointer, no additional options.

EVOLUTION 6000 Plus TIC



Evolution 6000 Plus thermal imaging camera adds additional tools to aid and improve fireground safety and decision making.

EVOLUTION 6000 Xtreme TIC



This has the same standard and optional features as Evolution 6000 Plus TIC, with the addition of standard integrated video and image capture.

Markets: Fire Service | Applications: Firefighting, Search & Rescue

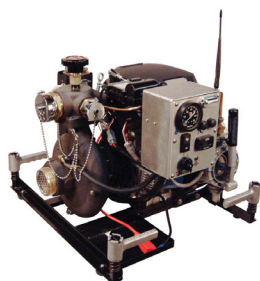
FIREFIGHTING


CHEMGUARD


Jaws of Life



Fire Pump



Nozzle



Foam



IRP Fire & Safety Ltd. is a full service fire protection and safety company and is a proud distributor of Mine Safety Appliances (MSA), Jacob Hoses, Buckeye, Akron, Williams Fire and Darley all of which are world class leaders in Fire Services Equipment.

We are the only Caribbean/CARICOM Authorized Distributor to offer the region's firefighters (both municipal and industrial) FULL after sales service (repairs, calibration and equipment testing) as well as training and certification.

- Hoses
- Nozzles
- Monitors
- Adapters
- Fire Protection Valves
- Foam & Foam Equipment
- Foam Stations
- TriMax
- Turnout Gear
- Fire Extinguishers
- Jaws of Life

HEAD PROTECTION



MSA Cairns XF1



Now is the right time to try a new style fire helmet. The jet-style design of the Cairns® XF1 Fire Helmet reduces snag hazards, provides a personalized fit, and houses its own integrated light module. Plus, the soft goods are removable, washable, and replaceable, helping firefighters align with cancer awareness programs as written by the Firefighter Cancer Support Network (FCSN).

Approvals | • NFPA 1971-2018 Structural Firefighting • NFPA 1951-2013 Rescue and Recovery



Cairns 360S Structural Thermoplastic Fire Helmet

The Cairns 360S Structural Fire Helmet is of the lightest available in the MSA Cairns line. Its lightweight design makes the 360S Fire Helmet the perfect search and rescue helmet for confined space and EMS work alike.

Approvals

- NFPA 1971-2018



Cairns 660C Metro™ Composite Fire Helmet

The MSA Cairns 660C Metro Modern Fire Helmet is versatile and durable to withstand various applications. Tough enough for structural or proximity firefighting, light enough for technical rescue and small enough for EMS and confined space applications.

Approvals

- NFPA 1971-2018 Structural Firefighting
- NFPA 1971-2018 Proximity Firefighting

Gallet F1 XF and Accessories



Developed with firefighters from around the globe, the Gallet F1 XF sets the new standard for structural firefighting helmets. It enters a new dimension of protection, functionalities integration, comfort of use and modularity. The configurable design makes the Gallet F1 XF fire helmet the perfect fit for various interventions such as structural and outdoor fires, technical rescue operations and road traffic accidents.

Approvals | • EC

FIRE TRUCKS



**Pierce Ford Commercial
Chassis Trucks**

**Pierce Heavy-Duty
Rescue Pumper**

**International
truck Chassis**



**Introducing
Oshkosh trucks**

Pierce Fire Trucks and Oshkosh Trucks, both carry a comprehensive product range.

Their vehicles are based on high quality chassis with superstructure specifications that have been developed over many years and offer the ideal choice for airports, Industrial and domestic applications. All vehicles are designed to ensure all local, environmental and legal requirements are met.

IRP Fire & Safety Ltd. prides itself in understanding customers' needs and ensuring a vehicle is supplied that meets those requirements.



PORTABLE GAS DETECTION INSTRUMENTS



Durability and advanced sensor technology that deliver reduced total cost of ownership.

ALTAIR® 5X Multigas Detector



- The ALTAIR 5X Gas Detector is capable of measuring up to 6 gases simultaneously and is now available with integrated PID sensor for VOC detection.

ALTAIR® 4XR Multigas Detector



- Outfitted with rapid response MSA XCell® sensors, the ALTAIR 4XR Gas Detector is the toughest 4-gas monitor on the market.
- It provides real-time incident awareness to team members.

ALTAIR® 2X Gas Detector



- Incorporate proven XCell® sensor technology.
- Enhance worker safety, compliance and traceability.
- Minimize cost of ownership.

GALAXY® GX2 Automated Test System



- Simultaneous testing of up to ten instruments.
- GALAXY GX2 System is optimized for use with MSA's XCell® Sensors; provides up to 50% cost of ownership reduction.

ALTAIR® Pump Probe



- 100ft (30m) sample draw.
- Visual filter inspection.
- Quick change components.
- Tough over-molded rubber armor.

Calibration Kits



- Single-case solution for calibrating MSA gas sensors and gas detectors.
- Lightweight, rugged, and easy to transport and store.
- 14 calibration kits available to meet multiple calibration requirements.

EMERGENCY VEHICLE LIGHTING



Lightbars



Deck & Dash Lights



Perimeter Lights



Lightsticks



Sirens & Controllers



Speakers



Scene Lights



Fenix industries designs, engineers and manufactures American-made emergency vehicle products. Founded in 2010, Fenix has become the fastest growing company in the industry through their unique combination of innovation and affordability. They believe there's no one more deserving of the best products and the best technology than first responders.

IRP FIRE & SAFETY LTD. TRAINING CENTRE

We have been servicing the Fire, Safety, Oil & Gas, Marine and Environmental industries, both nationally and regionally for over forty-five (45) years. Over the years we have developed into a prime supplier of equipment designed to be used for Gas Detection, Respiratory, Fall Protection, and Fire Fighting. Some of the suppliers from our Fire line include: MSA, Chemguard & Williams Fire, Buckeye, Fike and POK.

For many years we have been training our customers on the equipment we offer but have found the need for more formalized strategic training which includes further practical usage.

We have therefore invested significantly into a Training Centre that permits us to provide practical training intentionally designed for critical equipment that ensures the safety and fire protection of those that use it during an emergency event.

All our programmes will attempt to simulate real life expected experiences with interactive practical exercises using equipment that is new or unfamiliar to a company personnel. This person may not use it appropriately in line with best practice and this is where our Training Centre will provide that opportunity.



Training Programmes Offered For:

- Basic & Advanced Firefighting
- Industrial Firefighting
- Fire Warden
- Portable Gas Detection Instruments
- Self-Contained Breathing Apparatus
- Confined Space Entry
- Breathing Air Distribution System
- Fall Protection
- HAZWOPER (Hazardous Waste Operations & Emergency Response)





IRP FIRE & SAFETY LTD.

A member of the IRP Group of Companies

**A MEMBER OF THE IRP
GROUP OF COMPANIES**



**119 Boundary Road,
San Juan, Trinidad, W.I.**

Tel: (868) 674-0693/0694/3632

Fax: (868) 674-0736

Email: CSR.FSE@irpltd.com



www.irpltd.com



IRP FIRE & SAFETY LTD.

A member of the IRP Group of Companies

FIRE PROTECTION VALVES

www.irpltd.com
119 Boundary Road, San Juan, Trinidad
(868) 290-5334 / 674-0693 | 0694
farzul.ali@irpltd.com
glen.thompson@irpltd.com

NIBCO
AHEAD OF THE FLOW®



300 PSI CWP Iron Body Gate Valves

Fire Protection Valve • Outside Screw and Yoke • Resilient Wedge • Epoxy Coated Interior/Exterior • Pre-Grooved Stem for Supervisory Switch • Drilled, Tapped and Plugged at Boss Location A**

300 PSI/20.6 bar non-shock cold working pressure to 33°F to 160°F

Maximum working temperature 180°F at 250 PSI

UL/ULC LISTED† • FM APPROVED • CERTIFIED LEAD-FREE*
BY TRUESDAIL LABORATORIES TO NSF/ANSI 61 & 372

MATERIAL LIST

| PART | SPECIFICATION |
|----------------------------------|--|
| 1 Valve Body | Ductile Iron ASTM A536 65-45-12 |
| 2 Resilient Wedge | Ductile Iron ASTM A536/EPDM ASTM D2000 |
| 3 Wedge Nut | ASTM B584 UNS C83600 |
| 4 Dowel Pin | ASTM A276 SS304 |
| 5 Stem Back Seat O-Ring | EPDM ASTM D2000 |
| 6 Bonnet Gasket | EPDM ASTM D2000 |
| 7 Bonnet | Ductile Iron ASTM A536 |
| 8 Stem Packing | EPDM ASTM D2000 |
| 9 Threaded Rod | ASTM A276 SS304 |
| 10 Gland Bushing | ASTM B584 UNS C83600 |
| 11 Gland | Ductile Iron ASTM A536 |
| 12 Gland Nut | ASTM B148 C95200 Aluminum Bronze |
| 13 Yoke | Ductile Iron ASTM A536 |
| 14 Yoke Bushing | ASTM B150 C61400 |
| 15 Flat Point Set Screw | ASTM F912M |
| 16 Yoke Bushing Retainer | Cast Iron ASTM A126 Class B |
| 17 Handwheel | Ductile Iron ASTM A536 |
| 18 Handwheel Nut | Carbon Steel Zinc Plated |
| 19 Stem | Stainless Steel 304 |
| 20 Bonnet Screw | Corrosion-resistant Steel |
| 21 NPT Pipe Plug | Steel ASME B16.14 |
| 22 UL/FM Label (not shown) | Aluminum |
| 23 Yoke Nut | ASTM B148 C95200 Aluminum Bronze |
| 24 Drive Screw Label (not shown) | Stainless Steel 304 |

Coating — Electrostatically applied fusion-bonded epoxy 8-20 mil. inside and outside meets or exceeds AWWA C550. Epoxy coating is not intended to serve as a dielectric barrier internal to the piping system.

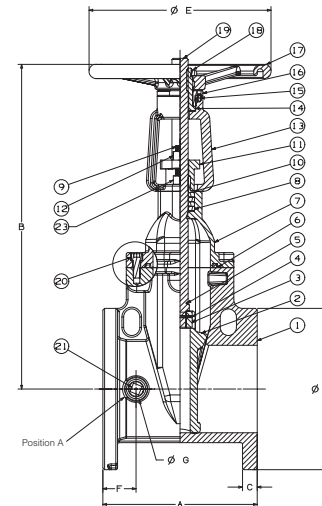
**Drilled, tapped and plugged at Position A with 1/2" valve sizes 2 1/2"-4", 3/4" on 6"-8", 1" on 10"-12".

† Compliance with the Standard for Gate Valves for Fire Protection Service, UL 262, and the Canadian Requirements, ULC/ORD-C262.

NOTE: Flanged valve is consistent with ANSI B16.1 Class 125.



F-607-RWS
Flanged



F-607-RWS
Flg x Flg

FREEZING WEATHER PRECAUTION: Subsequent to testing a piping system, valves should be left in an open position to allow complete drainage.



WARNING: This product can expose you to chemicals including lead, which is known to the State of California to cause cancer and birth defects or other reproductive harm. For more information go to www.P65Warnings.ca.gov.

DIMENSIONS—WEIGHTS—QUANTITIES

| Dimensions | | | | | | | | | | | | | | | | | | | | | | | | Bolt Circle | | Flange Holes | Turns To Open | Weight | |
|------------|-----|------|-----|--------|------|----------|------|------|------|------|-----|------|-----|------|-----|------|-----|-------|-----|------|------|-----|-----|-------------|--|--------------|---------------|--------|--|
| Size | | A | | B Open | | B Closed | | C | | D | | E | | F | | G | | | | | | | | | | | | | |
| In. | mm. | In. | mm. | In. | mm. | In. | mm. | In. | mm. | In. | mm. | In. | mm. | In. | mm. | In. | mm. | In. | mm. | Lbs. | Kg. | | | | | | | | |
| 2½ | 65 | 7.5 | 190 | 17.8 | 453 | 14.9 | 378 | 0.69 | 17.5 | 7.0 | 178 | 7.9 | 200 | 1.50 | 38 | 1.42 | 36 | 5.50 | 140 | 4 | 6.3 | 39 | 18 | | | | | | |
| 3 | 80 | 8.0 | 203 | 19.7 | 500 | 15.9 | 405 | 0.75 | 19.0 | 7.5 | 191 | 7.9 | 200 | 1.73 | 44 | 1.42 | 36 | 6.00 | 152 | 4 | 10.0 | 44 | 20 | | | | | | |
| 4 | 100 | 9.0 | 229 | 21.0 | 534 | 16.6 | 422 | 0.94 | 24.0 | 9.0 | 229 | 10.2 | 260 | 2.13 | 54 | 1.42 | 36 | 7.50 | 191 | 8 | 10.0 | 72 | 33 | | | | | | |
| 6 | 150 | 10.5 | 267 | 29.3 | 744 | 22.9 | 581 | 1.00 | 25.4 | 11.0 | 279 | 12.4 | 315 | 2.24 | 57 | 1.54 | 39 | 9.50 | 241 | 8 | 15.0 | 117 | 53 | | | | | | |
| 8 | 200 | 11.5 | 292 | 37.0 | 939 | 28.5 | 724 | 1.13 | 28.6 | 13.5 | 343 | 14.8 | 375 | 2.48 | 63 | 1.54 | 39 | 11.75 | 298 | 8 | 16.7 | 198 | 90 | | | | | | |
| 10 | 250 | 13.0 | 330 | 44.8 | 1139 | 34.5 | 877 | 1.19 | 30.2 | 16.0 | 406 | 16.4 | 416 | 3.15 | 80 | 1.82 | 46 | 14.25 | 362 | 12 | 20.8 | 374 | 170 | | | | | | |
| 12 | 300 | 14.0 | 356 | 52.2 | 1326 | 39.9 | 1014 | 1.25 | 31.8 | 19.0 | 483 | 17.5 | 445 | 2.91 | 74 | 1.82 | 46 | 17.00 | 432 | 12 | 25.0 | 493 | 224 | | | | | | |
| 14* | 350 | 15.0 | 375 | 62.2 | 1580 | 50.0 | 1270 | 1.38 | 35.0 | 21.0 | 533 | 19.7 | 500 | 2.95 | 75 | 3.20 | 81 | 18.75 | 476 | 12 | 43.8 | 620 | 284 | | | | | | |
| 16* | 400 | 16.0 | 400 | 65.9 | 1674 | 50.4 | 1280 | 1.44 | 37.0 | 23.5 | 597 | 19.7 | 500 | 3.03 | 77 | 3.20 | 81 | 21.25 | 540 | 16 | 50.0 | 816 | 370 | | | | | | |

*14 and 16" valves 250 PSI CWP

*Weighted average lead content ≤ 0.25%

Visit www.nibco.com for current Chem-Guide and galvanic potential in piping systems information.

300 PSI CWP Iron Body Gate Valves

Fire Protection Post Indicator Valve • Bolted Bonnet • Indicator Post Pattern •
Non-Rising Stem • Resilient Wedge • Epoxy Coated Interior/Exterior

300 PSI/20.6 Bar Non-Shock Cold Working Pressure

UL/ULC LISTED • FM APPROVED •
CERTIFIED LEAD-FREE* TO NSF/ANSI 372

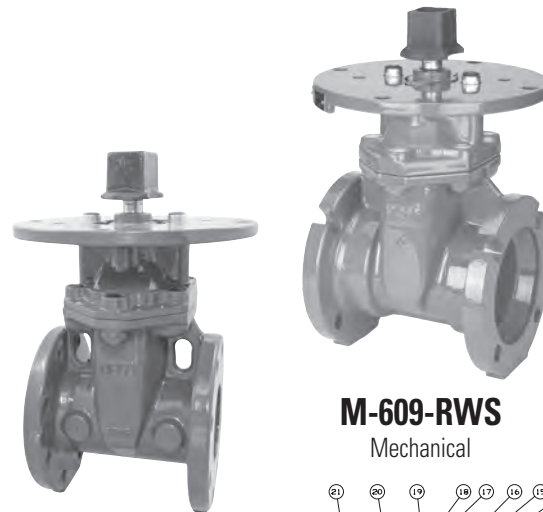


MATERIAL LIST

| PART | SPECIFICATION |
|-----------------------------------|--|
| 1 Valve Body | Ductile Iron ASTM A536 |
| 2 Resilient Wedge | Ductile Iron ASTM A536 / EPDM ASTM D2000 |
| 3 Wedge Nut | ASTM B584 UNS C83600 |
| 4 Stem | Stainless Steel 304 |
| 5 Bonnet Gasket | EPDM ASTM D2000 |
| 6 Bonnet Screw | Corrosion-resistant Steel |
| 7 Bonnet | Ductile Iron ASTM A536 |
| 8 Stem Primary O-Ring | EPDM ASTM D2000 |
| 9 Stem Thrust Washer (lower) | Bronze ASTM B584 UNS C83600 |
| 10 Stem Thrust Washer (upper) | Stainless Steel ASTM A276 UNS S41000 |
| 11 Gland Seal O-Ring | EPDM ASTM D2000 |
| 12 Stem Seal Bushing | ASTM B584 UNS C83600 |
| 13 Stem Secondary O-Ring | EPDM ASTM D2000 |
| 14 Gland Flange | Ductile Iron ASTM A536 |
| 15 Stem Ring Wiper | EPDM ASTM D2000 |
| 16 Square Operating Nut | Cast Iron ASTM A126-B |
| 17 Operating Nut Washer | ASTM A276 SS304 |
| 18 Operating Nut Screw | Alloy Steel ASTM A574M Zinc Plated |
| 19 Gland Flange Screw | Alloy Steel ASTM A574M Zinc Plated |
| 20 Indicator Flange Screw | Alloy Steel ASTM A574M Zinc Plated |
| 21 Indicator Post Flange | Cast Iron ASTM A126-B |
| 22 UL/FM Label (not shown) | Aluminum |
| 23 Drive Screw, Label (not shown) | Stainless Steel 304 |

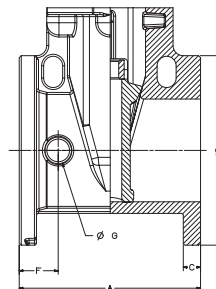
Coating — Electrostatically applied fusion-bonded epoxy 8-20 mil. inside and outside meets or exceeds AWWA C550.

NOTE: Flanged valve is consistent with ANSI B16.1 Class 125.

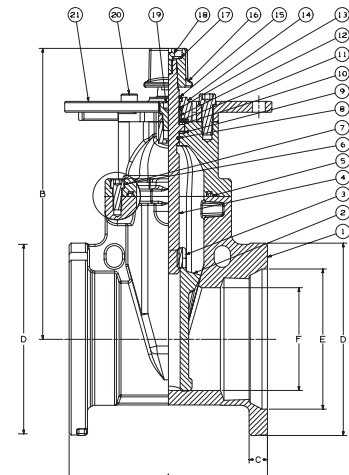


F-609-RWS
Flanged

M-609-RWS
Mechanical



F-609-RWS
Flg x Flg



M-609-RWS
MJ x MJ

DIMENSIONS—WEIGHTS—QUANTITIES

| M-609-RWS Dimensions | | | | | | | | | | Bolt | | | |
|----------------------|------|-----|------|-----|------|-----|------|-----|------|------|------|-----|----------|
| Size | A | | B | | C | | D | | E | | F | | Weight |
| In. mm. | In. | mm. | In. | mm. | In. | mm. | In. | mm. | In. | mm. | In. | mm. | Lbs. Kg. |
| 4 100 | 10.0 | 254 | 13.5 | 344 | 1.00 | 26 | 9.1 | 232 | 6.0 | 153 | 3.9 | 100 | 72 33 |
| 6 150 | 11.5 | 292 | 17.4 | 441 | 1.06 | 27 | 11.1 | 283 | 8.1 | 206 | 5.9 | 150 | 101 46 |
| 8 200 | 11.5 | 292 | 20.8 | 529 | 1.12 | 28 | 13.4 | 340 | 10.3 | 261 | 7.9 | 200 | 148 67 |
| 10 250 | 13.0 | 330 | 24.2 | 614 | 1.18 | 30 | 15.7 | 400 | 12.3 | 313 | 9.8 | 250 | 236 107 |
| 12 300 | 14.0 | 356 | 27.0 | 700 | 1.25 | 32 | 18.0 | 456 | 14.4 | 367 | 11.8 | 300 | 353 160 |

| F-609-RWS Dimensions | | | | | | | | | | Bolt | | | |
|----------------------|------|-----|------|-----|------|------|------|-----|------|------|------|-----|----------|
| Size | A | | B | | C | | D | | F | | G | | Weight |
| In. mm. | In. | mm. | In. | mm. | In. | mm. | In. | mm. | In. | mm. | In. | mm. | Lbs. Kg. |
| 4 100 | 9.0 | 229 | 13.5 | 344 | 0.94 | 24.0 | 9.0 | 229 | 2.13 | 54 | 1.42 | 36 | 75 34 |
| 6 150 | 10.5 | 267 | 17.4 | 441 | 1.00 | 25.4 | 11.0 | 279 | 2.24 | 57 | 1.54 | 39 | 106 48 |
| 8 200 | 11.5 | 292 | 20.8 | 529 | 1.13 | 28.6 | 13.5 | 343 | 2.48 | 63 | 1.54 | 39 | 163 74 |
| 10 250 | 13.0 | 330 | 24.2 | 614 | 1.19 | 30.2 | 16.0 | 406 | 3.15 | 65 | 1.82 | 46 | 256 116 |
| 12 300 | 14.0 | 356 | 27.0 | 700 | 1.25 | 31.8 | 19.0 | 483 | 2.91 | 74 | 1.82 | 46 | 394 181 |
| 14 — | 15.0 | 381 | 32.0 | 813 | 1.38 | 35.0 | 21.0 | 533 | 2.95 | 75 | 3.15 | 80 | — — |
| 16 — | 16.0 | 400 | 34.5 | 876 | 1.50 | 38.0 | 23.5 | 597 | 3.07 | 78 | 3.15 | 80 | — — |

FREEZING WEATHER PRECAUTION:
Subsequent to testing a piping system, gate valve should be in an open position to allow complete drainage.

WARNING: This product can expose you to chemicals including lead, which is known to the State of California to cause cancer and birth defects or other reproductive harm. For more information go to www.P65Warnings.ca.gov.

Visit our website for the most current information.

*Weighted average lead content ≤ 0.25%

250 PSI WWP UL/FM Butterfly Valves

Fire Protection Valve • Wafer or Lug Style Body • Molded in Seat • Accepts Internal Supervisory Switches • Mates with C.I. Class 125/Steel Class 150 Flanges

250 PSI/17.2 Bar Non-Shock Cold Water

DESIGNED TO COMPLY WITH MSS SP-67 • UL/ULC LISTED • FM APPROVED •
2" - 12" UL/FM LISTED FOR INDOOR AND OUTDOOR SERVICE • APPROVED BY NEW
YORK CITY MEA 90-07-E • CALIFORNIA STATE FIRE MARSHAL
LISTING NO. 7770-1243:104 • U.S. COAST GUARD "Category A"



MATERIAL LIST

| PART | SPECIFICATION |
|--------------------|---------------------------------------|
| 1. Stem | Stainless Steel ASTM 582 Type 416 |
| 2. Collar Bushing | Brass ASTM B124 |
| 3. Upper Bushing | Copper Alloy CDA 122 |
| 4. Stem Seal | EPDM |
| 5. Body Seal | EPDM |
| 6. Disc | Ductile Iron ASTM 395 (Nickel Plated) |
| 7. Liner | EPDM |
| 8. Lower Bushing | Copper Alloy CDA 122 |
| 9. Nameplate | Aluminum |
| 10. Body | Ductile Iron ASTM A536 |
| 11. Gear Operator | Cast Iron and Steel |
| 12. Indicator Flag | Cast Iron |
| 13. Handwheel | Cast Iron |

**8 version has two factory mounted internal supervisory switches.
-4 version has no switches.

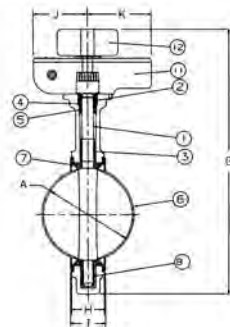
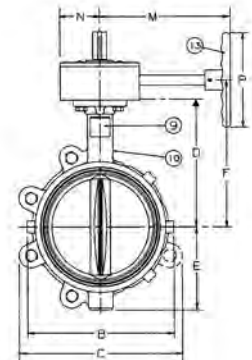
Note: Wafer body will mate with ANSI or ISO flanges. O.D. of wafer body notched to fit ISO bolt circle.
For dead-end service use lug style (rated 200 PSI for this service).



LD-3510-8**
Lug



WD-3510-8**
Wafer
(4" Shown)



(10" Shown)

DIMENSIONS—WEIGHTS—QUANTITIES

| Dimensions | | | | | | | | | | | |
|------------|-----------|-----------|-----------|-----------|----------|-----------|-----------|---------|---------|---------|--|
| Size | A | B | C | D | E | F | G | H | I | J | |
| In. mm. | In. mm. | In. mm. | In. mm. | In. mm. | In. mm. | In. mm. | In. mm. | In. mm. | In. mm. | In. mm. | |
| 2 50 | 2.53 64 | 4.88 124 | 4.62 117 | 5.38 137 | 2.88 73 | 6.89 175 | 12.75 324 | 1.68 43 | 1.81 46 | 2.91 74 | |
| 2½ 65 | 2.90 74 | 5.62 143 | 5.12 130 | 5.88 149 | 3.25 83 | 7.36 187 | 13.63 346 | 1.81 46 | 1.94 49 | 2.91 74 | |
| 3 80 | 3.17 81 | 6.12 155 | 5.50 140 | 6.12 155 | 3.38 86 | 7.60 193 | 14.00 356 | 1.81 46 | 1.94 49 | 2.91 74 | |
| 4 100 | 4.17 106 | 7.00 178 | 6.25 160 | 6.88 175 | 4.00 102 | 8.39 213 | 15.38 391 | 2.06 52 | 2.19 56 | 2.91 74 | |
| 5 125 | 5.17 131 | 8.25 210 | 7.38 187 | 7.38 187 | 4.75 121 | 8.86 225 | 16.63 422 | 2.19 56 | 2.31 59 | 2.91 74 | |
| 6 150 | 6.17 157 | 9.25 235 | 8.00 203 | 8.00 203 | 5.25 133 | 9.49 241 | 17.75 451 | 2.19 56 | 2.31 59 | 2.91 74 | |
| 8 200 | 8.17 208 | 11.62 295 | 9.25 235 | 9.25 235 | 6.50 165 | 10.75 273 | 20.25 514 | 2.38 60 | 2.50 64 | 2.91 74 | |
| 10 250 | 10.17 258 | 14.25 362 | 10.50 267 | 10.50 267 | 8.00 203 | 12.28 312 | 23.50 597 | 2.68 69 | 2.81 71 | 3.90 99 | |
| 12 300 | 12.17 309 | 16.75 425 | 12.00 305 | 12.00 305 | 9.25 235 | 13.78 350 | 26.25 667 | 3.00 76 | 3.12 79 | 3.90 99 | |

| Dimensions | | | | | | | | | | Flange/Stud Data | | | | Weight | | | |
|------------|----------|----------|---------|----------|-----|---------|----------|---------|-----------|------------------|---------|---------|---------|----------|----------|--|--|
| Size | K | M | N | P | | | | | | Dia | Wafer | Lug | BC | Lug | Wafer | | |
| In. mm. | In. mm. | In. mm. | In. mm. | In. mm. | No. | In. mm. | In. mm. | In. mm. | In. mm. | In. mm. | In. mm. | In. mm. | In. mm. | Lbs. Kg. | Lbs. Kg. | | |
| 2 50 | 3.54 90 | 5.82 148 | 2.13 54 | 5.9 150 | 4 | ¾ 16 | 4.00 101 | 1.25 32 | 4.75 121 | 23 | 11 | 21 | 10 | | | | |
| 2½ 65 | 3.54 90 | 5.82 148 | 2.13 54 | 5.9 150 | 4 | ¾ 16 | 4.25 108 | 1.50 38 | 5.50 140 | 25 | 11 | 24 | 11 | | | | |
| 3 80 | 3.54 90 | 5.82 148 | 2.13 54 | 5.9 150 | 4 | ¾ 16 | 4.25 108 | 1.50 38 | 6.00 152 | 26 | 12 | 24 | 11 | | | | |
| 4 100 | 3.54 90 | 5.82 148 | 2.13 54 | 5.9 150 | 8 | ¾ 16 | 5.00 127 | 2.00 51 | 7.50 191 | 31 | 14 | 27 | 12 | | | | |
| 5 125 | 3.54 90 | 7.64 194 | 2.13 54 | 5.9 150 | 8 | ¾ 20 | 5.25 133 | 2.00 51 | 8.50 216 | 37 | 17 | 31 | 14 | | | | |
| 6 150 | 3.54 90 | 7.64 194 | 2.13 54 | 5.9 150 | 8 | ¾ 20 | 5.25 133 | 2.00 51 | 9.50 241 | 40 | 18 | 34 | 15 | | | | |
| 8 200 | 3.54 90 | 7.91 201 | 2.13 54 | 9.8 250 | 8 | ¾ 20 | 5.75 146 | 2.25 57 | 11.75 298 | 55 | 25 | 49 | 22 | | | | |
| 10 250 | 3.98 101 | 9.49 241 | 3.03 77 | 18.0 457 | 12 | 7/8 22 | 6.25 159 | 2.50 64 | 14.25 362 | 95 | 43 | 78 | 35 | | | | |
| 12 300 | 3.98 101 | 9.49 241 | 3.03 77 | 18.0 457 | 12 | 7/8 22 | 6.75 171 | 2.50 64 | 17.00 432 | 123 | 56 | 103 | 47 | | | | |

WARNING: This product can expose you to chemicals including lead, which is known to the State of California to cause cancer and birth defects or other reproductive harm. For more information go to www.P65Warnings.ca.gov.

Visit our website for the most current information.

Upright Indicator Posts

Fire Protection • Upright Style • For Use with Non-Rising Stem Indicator Post Style Gate Valves

UL/ULC LISTED • FM APPROVED

PATENT #US 9,541,218



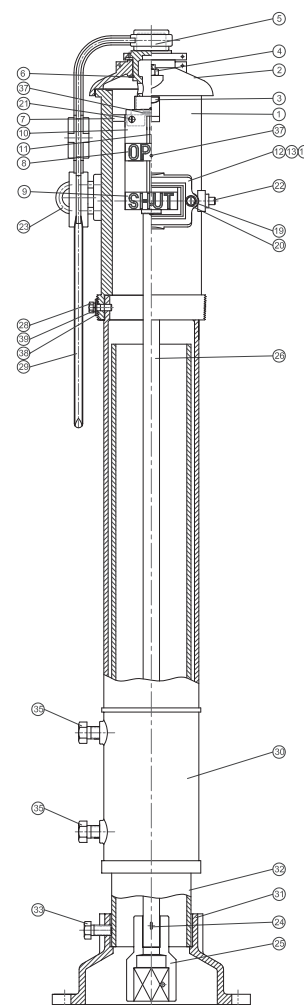
MATERIAL LIST

| PART | SPECIFICATION |
|----------------------------------|--------------------------------------|
| 1. Upper Body | Ductile Iron ASTM A536 Gr. 65-45-12 |
| 2. Cap | Ductile Iron ASTM A536 Gr. 65-45-12 |
| 3. T-Head Bolt, Cap (2) | Steel, Zinc Plated ASTM A105 |
| 4. Nut, Cap (2) | Steel, Zinc Plated ASTM A105 |
| 5. Operating Stem | Bronze ASTM B584 C84400 / B62 C83600 |
| 6. Retaining Ring | Stainless Steel ASTM A276 S30400 |
| 7. Leading Bogie | Bronze ASTM B584 C84400 / B62 C83600 |
| 8 Target Plate, OPEN (2) | Aluminum ASTM B26 |
| 9. Target Plate, SHUT (2) | Aluminum ASTM B26 |
| 10. Extension Plate (2) | Steel, Painted Black ASTM A1008 |
| 11. Target Rod (2) | Brass ASTM B16 C36000 |
| 12. View Window (2) | Polycarbonate Commercial |
| 13. Gasket, Window (2) | Rubber ASTM D2000 EPDM |
| 14. Guard, Window (2) | Cast Iron ASTM B124 Gr. B |
| 19. Screw, Hex Head Cap (4) | Stainless Steel S30400 |
| 20. Washer (4) | Stainless Steel S30400 |
| 21. Screw, Slotted Flat Head (4) | Stainless Steel S30400 |
| 22. Plug, 1/2" Pipe | Steel, Zinc Plated Commercial |
| 23. U-Bolt | Forged Steel ASTM A105 |
| 24. Cotter Pin | Stainless Steel S30400 |
| 25. Coupling, Operating Rod | Ductile Iron ASTM A536 Gr. 65-45-12 |
| 26. Operating Rod | Steel ASTM A105 |
| 28. Screw, Hex Head Cap | Stainless Steel S30400 |
| 29. Wrench, Operating | Ductile Iron ASTM A536 Gr. 65-45-12 |
| 30. Center Body | Ductile Iron ASTM A536 Gr. 65-45-12 |
| 31. Base Body | Ductile Iron ASTM A536 Gr. 65-45-12 |
| 32. Barrel | Ductile Iron ASTM A536 Gr. 65-45-12 |
| 33. Screw, Hex Head Cap (3) | Stainless Steel S30400 |
| 35. Screw, Hex Head Cap (2) | Stainless Steel S30400 |
| 37. Screw, Socket Head Set (6) | Stainless Steel S30400 |
| 38. Washer, Flat | Stainless Steel S30400 |
| 39. Washer, Lock | Stainless Steel S30400 |



NIP-1AU

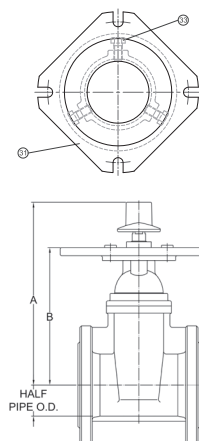
Upright
Shown with
post indicator
valve



DIMENSIONAL DATA FOR NIBCO RWGV AND IBBM GATE VALVES

| Valve Size | NIBCO RESILIENT WEDGE GATE VALVES (RWGV) | | | | | | | NIBCO IRON BODY BRONZE MOUNTED GATE VALVES (IBBM) | | | | | | |
|------------|--|-------|-----|-------|-----|-------------|-----|---|-------|-----|-------|-----|-------------|-----|
| | TURNS TO OPEN | A | | B | | 1/2 Pipe OD | | TURNS TO OPEN | A | | B | | 1/2 Pipe OD | |
| | | In. | mm. | In. | mm. | In. | mm. | | In. | mm. | In. | mm. | In. | mm. |
| 4" | 13 | 13.46 | 342 | 10.12 | 257 | 2.40 | 61 | 9 | 14.13 | 359 | 10.47 | 266 | 2.40 | 61 |
| 6" | 15.7 | 17.01 | 432 | 13.78 | 350 | 3.45 | 88 | 13.5 | 18.54 | 471 | 16.30 | 414 | 3.45 | 88 |
| 8" | 17.3 | 20.47 | 520 | 17.32 | 440 | 4.53 | 115 | 17.5 | 22.13 | 562 | 18.11 | 460 | 4.53 | 115 |
| 10" | 21.4 | 23.82 | 605 | 20.71 | 526 | 5.50 | 140 | 30.3 | 25.75 | 654 | 21.89 | 556 | 5.50 | 140 |
| 12" | 25.3 | 27.01 | 686 | 23.86 | 606 | 6.60 | 168 | 38.3 | 29.49 | 749 | 24.57 | 624 | 6.60 | 168 |
| 14" | 44 | 31.81 | 808 | 28.58 | 726 | 7.65 | 194 | | | | | | | |
| 16" | 50 | 34.21 | 869 | 30.98 | 787 | 8.70 | 221 | | | | | | | |

NIP-1AU



WARNING: This product can expose you to chemicals including lead, which is known to the State of California to cause cancer and birth defects or other reproductive harm. For more information go to www.P65Warnings.ca.gov.

Visit our website for the most current information.

Upright Indicator Posts

NIBCO UPRIGHT INDICATOR POST VALVE BURY DEPTH

| Valve Size | Rounded Adjustable Bury Depth Range | NIBCO RESILIENT WEDGE GATE VALVES (RWGV) | | | | | | | | NIBCO IRON BODY BRONZE MOUNTED GATE VALVES (IBBM) | | | | | | | |
|------------|-------------------------------------|--|------|------------|------|------------|------|-------------|------|---|------|------------|------|------------|------|-------------|------|
| | | NIP-1AU | | NIP-1AU E | | NIP-1AU EE | | NIP-1AU EEE | | NIP-1AU | | NIP-1AU E | | NIP-1AU EE | | NIP-1AU EEE | |
| | | Bury Depth | | Bury Depth | | Bury Depth | | Bury Depth | | Bury Depth | | Bury Depth | | Bury Depth | | Bury Depth | |
| | | In. | mm. | In. | mm. | In. | mm. | In. | mm. | In. | mm. | In. | mm. | In. | mm. | In. | mm. |
| 4" | MINIMUM | 28 | 724 | 46 | 1181 | 64 | 1638 | 82 | 2095 | 29 | 733 | 47 | 1190 | 65 | 1647 | 83 | 2104 |
| | MAXIMUM | 48 | 1232 | 66 | 1689 | 84 | 2146 | 102 | 2603 | 49 | 1241 | 67 | 1698 | 85 | 2155 | 103 | 2612 |
| 6" | MINIMUM | 33 | 844 | 51 | 1301 | 69 | 1758 | 87 | 2215 | 36 | 908 | 54 | 1365 | 72 | 1822 | 90 | 2279 |
| | MAXIMUM | 53 | 1352 | 71 | 1809 | 89 | 2266 | 107 | 2723 | 56 | 1416 | 74 | 1873 | 92 | 2330 | 110 | 2787 |
| 8" | MINIMUM | 38 | 961 | 56 | 1418 | 74 | 1875 | 92 | 2332 | 39 | 981 | 57 | 1438 | 75 | 1895 | 93 | 2352 |
| | MAXIMUM | 58 | 1469 | 76 | 1926 | 94 | 2383 | 112 | 2845 | 59 | 1489 | 77 | 1946 | 95 | 2403 | 113 | 2860 |
| 10" | MINIMUM | 42 | 1072 | 60 | 1529 | 78 | 1986 | 96 | 2443 | 43 | 1102 | 61 | 1559 | 79 | 2016 | 97 | 2473 |
| | MAXIMUM | 62 | 1580 | 80 | 2037 | 98 | 2494 | 116 | 2951 | 63 | 1610 | 81 | 2067 | 99 | 2524 | 117 | 2981 |
| 12" | MINIMUM | 46 | 1180 | 64 | 1637 | 82 | 2094 | 100 | 2551 | 47 | 1198 | 65 | 1655 | 83 | 2112 | 101 | 2569 |
| | MAXIMUM | 66 | 1688 | 84 | 2145 | 102 | 2602 | 120 | 3059 | 67 | 1706 | 85 | 2163 | 103 | 2620 | 121 | 3077 |
| 14" | MINIMUM | 52 | 1326 | 70 | 1783 | 88 | 2240 | 106 | 2697 | | | | | | | | |
| | MAXIMUM | 72 | 1834 | 90 | 2291 | 108 | 2748 | 126 | 3205 | | | | | | | | |
| 16" | MINIMUM | 56 | 1414 | 74 | 1871 | 92 | 2328 | 110 | 2785 | | | | | | | | |
| | MAXIMUM | 76 | 1922 | 94 | 2379 | 112 | 2836 | 130 | 3293 | | | | | | | | |

NIBCO UPRIGHT INDICATOR POST ADJUSTABLE HEIGHT RANGE

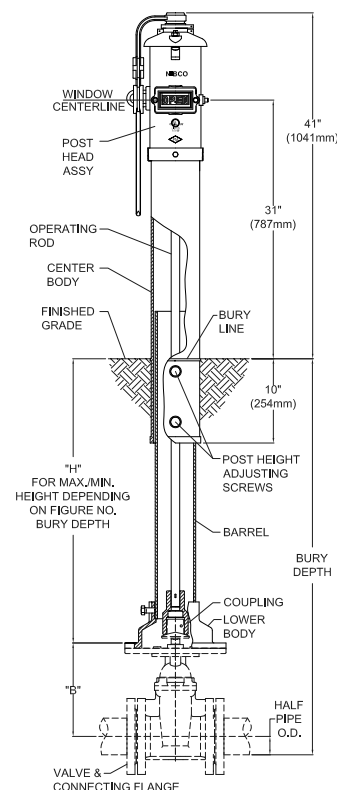
| Adjustable Height Range | NIP-1AU | | NIP-1AU E | | NIP-1AU EE | | NIP-1AU EEE | |
|-------------------------|---------|-----|-----------|------|------------|------|-------------|------|
| | H | | H | | H | | H | |
| | In. | mm. | In. | mm. | In. | mm. | In. | mm. |
| MINIMUM | 16 | 406 | 34 | 864 | 52 | 1321 | 70 | 1778 |
| MAXIMUM | 36 | 914 | 54 | 1372 | 72 | 1829 | 90 | 2286 |

WEIGHTS*

| Fig. No. | Lbs. | KG |
|-------------|------|-----|
| NIP-1AU | 178 | 81 |
| NIP-1AU E | 204 | 93 |
| NIP-1AU EE | 230 | 104 |
| NIP-1AU EEE | 256 | 116 |

* Includes rod and coupling

WARNING: This product can expose you to chemicals including lead, which is known to the State of California to cause cancer and birth defects or other reproductive harm. For more information go to www.P65Warnings.ca.gov.



Visit our website for the most current information.